

# RICH VALLEY TOWNSHIP

Each township has six files containing six sections in each, and one file containing all 36 sections.

RichValley01to06.pdf  
RichValley07to12.pdf  
RichValley13to18.pdf  
RichValley19to24.pdf  
RichValley25to30.pdf  
RichValley31to36.pdf  
RichValleyAll36.pdf

The points are listed starting with the point above the SE corner and continuing in a counter-clockwise rotation around the section. This normally begins with the East point, Northeast, then North, but may also include Witness Corners, and/or Meander Corners.

## **Definitions**

**Witness Corner:** A witness corner “stands in” when the true corner cannot be monumented or occupied because of difficult terrain or obstruction of the corner sight. The witness corner must be on the section line and is usually 5 or 10 chains away from the true corner.

**Meander Corner:** The intersection of a township, range, or section line and the banks of a navigable stream or meandering body of water.

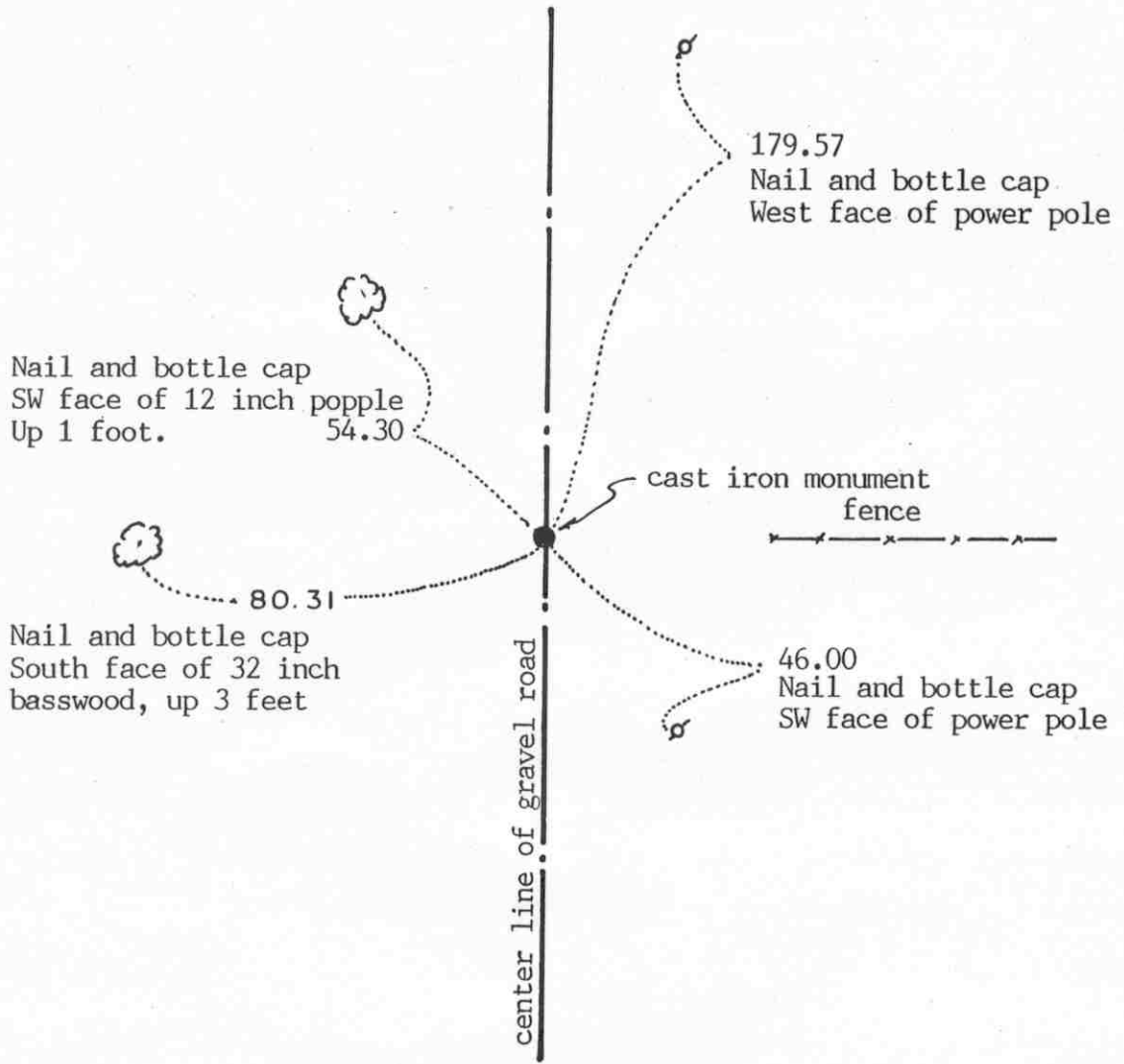
EAST QUARTER corner, Section 31, Township 116 North, Range 28 West

# Certificate of Location of Government Corner

SKETCH OF REFERENCE TIES  
(NO SCALE)

SECTION 31

SECTION 32



Statement of evidence relative to this corner location on sheet 2

I hereby certify that this document was prepared by me or under my direct supervision.

Willard Pellinen

Willard Pellinen  
McLeod County Surveyor  
License No. 9626

Date April 5, 1994

OFFICE OF THE COUNTY RECORDER  
MCLEOD COUNTY, MINNESOTA.

I hereby certify that this document was filed in this office at 9 o'clock A. M. on the 20th day of April, 1994.

Carmen Helio Mulder, County Recorder

By \_\_\_\_\_, Deputy

Document No. 259049

## Certificate of Location of Government Corner

September, 1856. D. L. Langton of the General Land Office established this corner. He set a post and marked an elm and a linden for bearing trees.

February 25, 1981. We found a stone, down 4 inches below the surface of the road. Mr. Harold Johnson, 65 years old and had lived in the South Half of Section 32 all his life, said this is the correct quarter corner.

May 20, 1982. We dug up the stone to make room for a monument and dug down  $3\frac{1}{2}$  feet but found nothing else. The stone was 4 inches in diameter at the top ( with a drill hole in the center ), 6 inches in diameter at the bottom and 8 inches high. We set a McLeod County cast iron monument and took available reference ties. We set a  $\frac{1}{2}$  inch diameter iron pipe below the monument. This corner is within 7 feet of being half way between the section corners.

December 13, 1993. We found the monument in good condition and checked the reference ties.

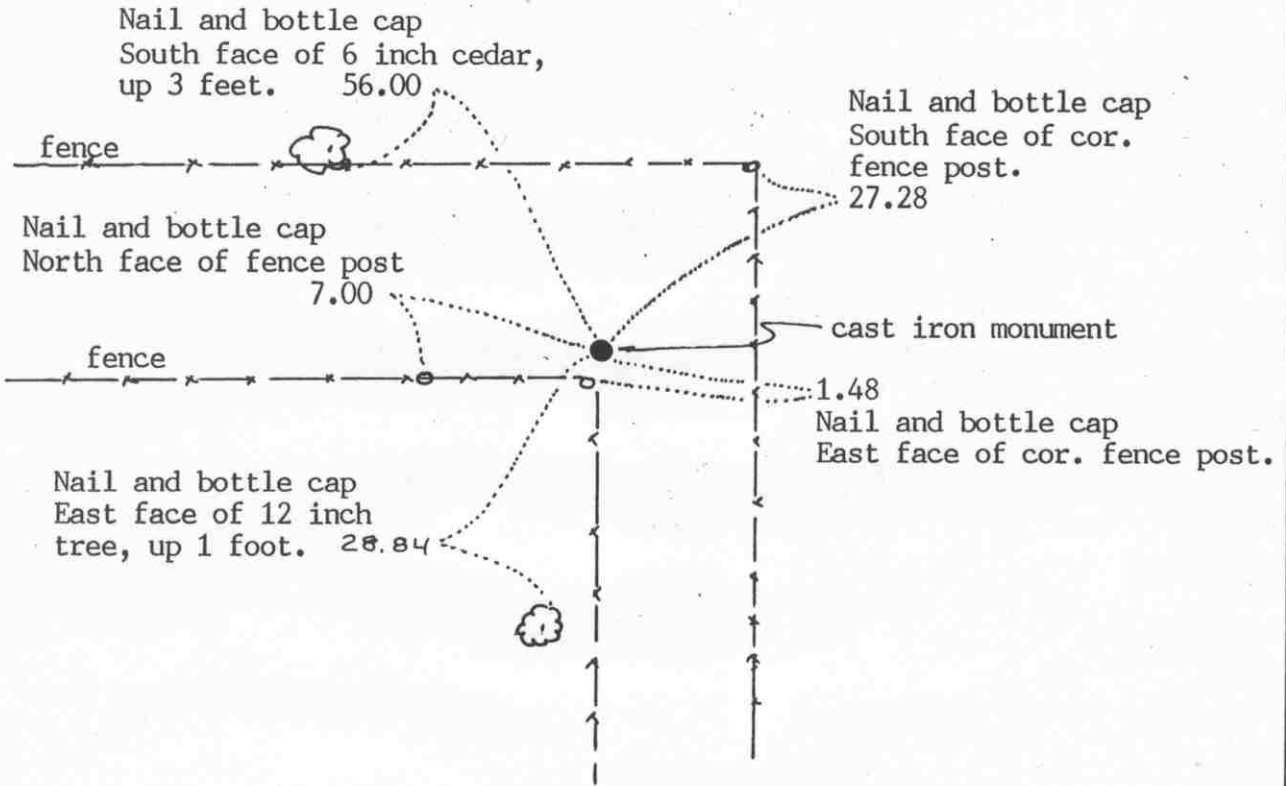
NORTHEAST corner, Section 31, Township 116 North, Range 28 West

# Certificate of Location of Government Corner

SKETCH OF REFERENCE TIES  
(NO SCALE)

SECTION 30

SECTION 29



SECTION 31

SECTION 32

Statement of evidence relative to this corner location on sheet 2

I hereby certify that this document was prepared by me or under my direct supervision.

Willard Pellinen  
Willard Pellinen  
McLeod County Surveyor  
License No. 9626

Date December 23, 1993.

OFFICE OF THE COUNTY RECORDER  
MCLEOD COUNTY, MINNESOTA.

I hereby certify that this document was filed in this office at 9 o'clock A.M. on the 21st day of January, 1994.

Armen Botchie Mulder, County Recorder

By \_\_\_\_\_, Deputy

Document No. 257386

NORTHEAST            corner, Section 31, Township 116 North, Range 28 West

## Certificate of Location of Government Corner

September, 1856. D. L. Langton of the General Land Office established this corner. He set a post and marked 2 oaks and 2 aspens for bearing trees.

December, 1941. J. LaMere, J. Malva (Twp Clerk), E. Clayton and A. Karstens found an old oak post about 8 inches east of the corner fence post. They replaced it with a 2 inch iron post with a 4 inch gear on top.

February 25, 1981. We found the iron post with the gear about 8 inches east of the corner fence post. Fences west and south.

November 23, 1983. We took reference ties to the iron and left it in place.

December 13, 1993. We found the gear down 6 inches below the surface and took new reference ties.

NORTH QUARTER corner, Section 31, Township 116 North, Range 28 West

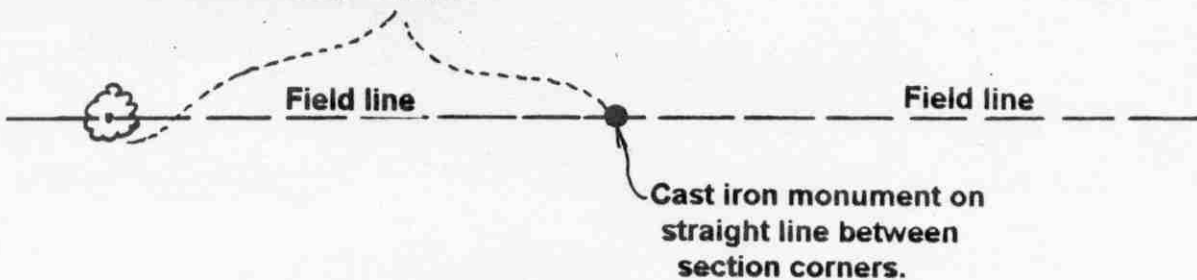
# Certificate of Location of Government Corner

SKETCH OF REFERENCE TIES  
(NO SCALE)

## SECTION 30



Nail and bottle cap in south  
face of 40 inch tree. 352.30



## SECTION 31

Statement of evidence relative to this corner location on sheet 2

I hereby certify that this document was prepared by me or under my direct supervision.

Willard Pellinen  
Willard Pellinen  
McLeod County Surveyor  
License No. 9626

Date Dec. 13, 1990

OFFICE OF THE COUNTY RECORDER  
MCLEOD COUNTY, MINNESOTA.

I hereby certify that this document was filed in this office at 9 o'clock A.M. on the 9th day of January, 19 96.

Carmen Estlie Mulder, County Recorder

By Charleen Engelman, Deputy

Document No. 270212

NORTH QUARTER corner, Section 31, Township 116 North, Range 28 West

## Certificate of Location of Government Corner

September, 1856. D. L. Langton of the General Land Office established this corner. He set corner in mound, drove charred stake and dug trench as per instructions.

January 29, 1901. E. L. Higgins' field notes show a distance to the northeast and northwest corners of the section. He doesn't show what was found or set at the quarter corner.

February 25, 1981. We measured the north line of Section 31 and set a temporary corner ( $\frac{1}{2}$  inch diam. iron pipe) along the east-west field line.

March 2, 1981. We set a  $\frac{1}{2}$  inch diameter iron pipe on a straight line between the section corners on a proration of the 1901 distances to the section corners. Our distances are within  $1\frac{1}{2}$  feet of Higgins' distances to each corner.

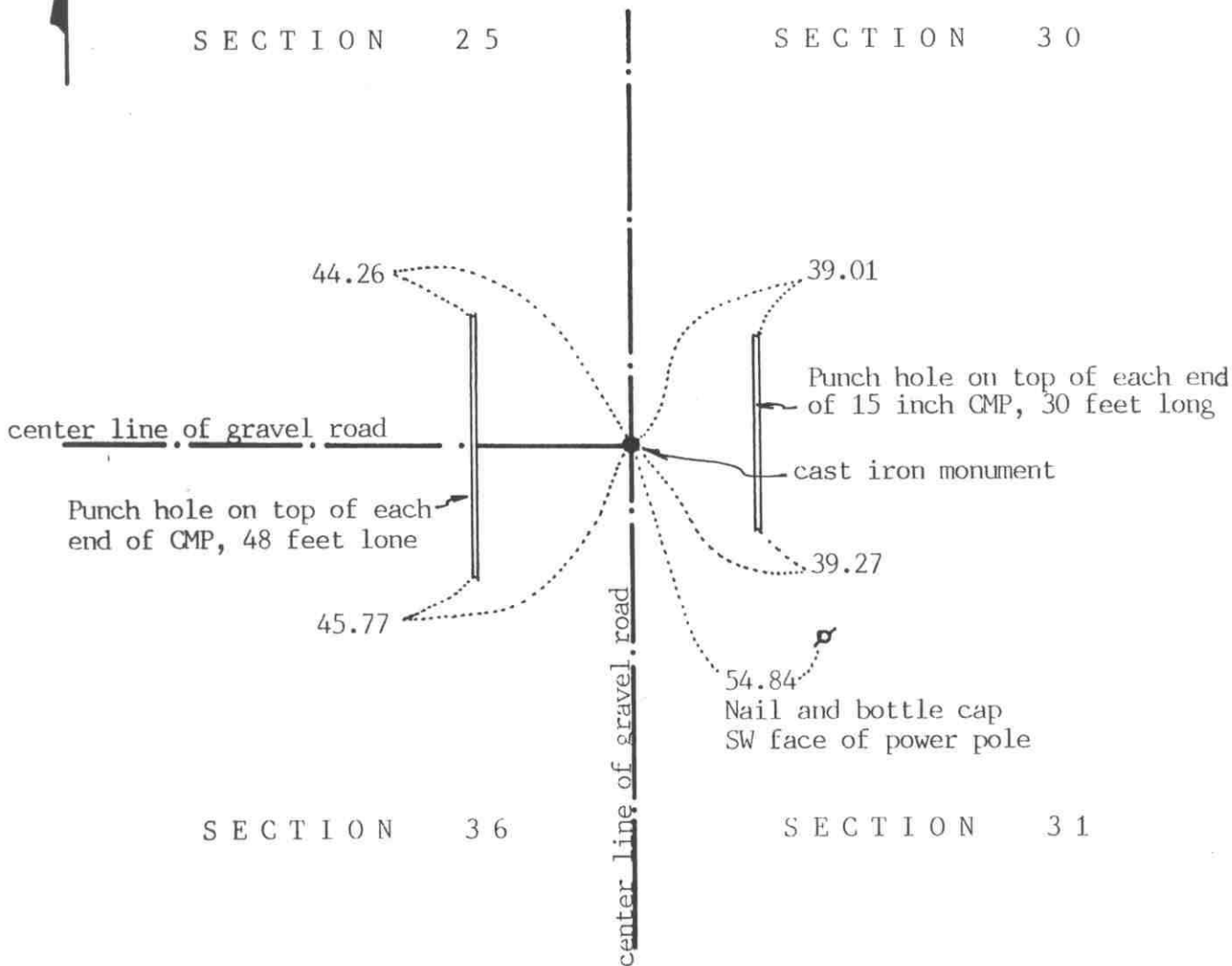
November 23, 1983. We set a McLeod County cast iron monument down  $1\frac{1}{2}$  feet below the surface with a  $\frac{1}{2}$  inch diameter iron pipe over the monument. We took available reference ties.

# Certificate of Location of Government Corner



## SKETCH OF REFERENCE TIES

(NO SCALE)



Statement of evidence relative to this corner location on sheet 2

I hereby certify that this document was prepared by me or under my direct supervision.

Willard Pellinen

Willard Pellinen  
McLeod County Surveyor  
License No. 9626

Date Oct. 8, 1991

OFFICE OF THE COUNTY RECORDER  
MCLEOD COUNTY, MINNESOTA.

I hereby certify that this document was filed in this office at 1 o'clock P.M. on the 21st day of Oct, 1991.

Carmen Ostlie, County Recorder

By \_\_\_\_\_, Deputy

Document No. 241619



NORTHEAST \_\_\_\_\_ corner, Section 36, Township 116 North, Range 29 West

## Certificate of Location of Government Corner

July, 1855. This corner was established by John Ryan. He set a post and marked 3 aspens for bearing trees.

1901. E.L Higgins, surveyor, measured 2635.6 feet to the east quarter corner of Section 25 and 2770.8 feet to the north quarter corner of Section 31.

19???. Old county highway department field notes show a stone at the corner and a distance of 2622.50 feet to the east quarter corner of Section 36 and a distance of 2636 feet to the east quarter corner of Section 25.

April 16, 1970. McCombs Knutson Associated (Dickman Knutson, county surveyor) excavated for the corner, John Tupa from Hutchinson with a backhoe. The dug a hole 3 feet by 8 feet by 3 feet deep. Down at 3 feet they found a 1 inch diameter iron pin. They took reference ties and left the iron pin in place. Knutson set a cast iron monument at the corner.

November, 1983. We measured 2636.18 feet to the east quarter corner of Section 25 compared with 2636 by the highway department and 2769.32 feet to the north quarter corner of Section 31 compared with the old distance of 2770.8 by Higgins in 1901.

July 16, 1990. We found the cast iron monument in good condition 8 inches below the road surface and took new reference ties.

The monument is accepted as the location of the corner because it perpetuates the position of the old iron pin, it fits the occupation lines, the center lines of the road and it agrees very nearly with the old survey distances.

# Certificate of Location of Government Corner

SKETCH OF REFERENCE TIES

(NO SCALE)



SECTION 36

SECTION 31

Nail and bottle cap  
SW face of post by  
telephone pedestal

59.07

cast iron monument

Nail and bottle cap  
NW face of power pole  
50.22

34.42

Punch hole on top of each end  
of 24 inch CMP, 70 feet long

center line of gravel drive

84.20

center line of bituminous road

Statement of evidence relative to this corner location on sheet 2

I hereby certify that this document  
was prepared by me or under my  
direct supervision.

Willard Pellinen

Willard Pellinen  
McLeod County Surveyor  
License No. 9626

Date Oct. 8, 1991

OFFICE OF THE COUNTY RECORDER  
MCLEOD COUNTY, MINNESOTA.

I hereby certify that this document was filed in this  
office at 1 o'clock P.M. on the 21st day  
of Oct, 1991.

Carmen Ostlie County Recorder

By \_\_\_\_\_, Deputy

Document No. 241620

EAST QUARTER corner, Section 36, Township 116 North, Range 29 West

## Certificate of Location of Government Corner

July, 1855. John Ryan of the General Land Office set a post, deposited charcoal, dug pits and trench, built mound and planted osage orange seeds at the corners of the mound.

December 23, 1899. Field notes by E.L. Higgins, county surveyor, show an iron pin at the corner.

19???. Old field notes of County Highway Department show an iron pipe at the corner. They show a distance of 2622.50 feet to the northeast corner of Section 36.

October 2, 1970. McCombs Knutson Associates (Dickman Knutson, county surveyor) excavated for the corner, John Tupa from Hutchinson with a backhoe. Down 3 feet below the road surface they found a stone and a wood stake below the stone.

Knutson set a McLeod County cast iron monument at the corner.

February 26, 1981. We measured the east line of Section 36 and had a distance of 2622.94 feet to the northeast corner compared with the distance of 2622.50 by County Hwy Department.

July 16, 1990. We checked the reference ties to the corner.

The cast iron monument is accepted as the correct location of the quarter corner. It fits occupation lines, the center line of the road and it perpetuates the location of the old monuments, the stone and wood stake.

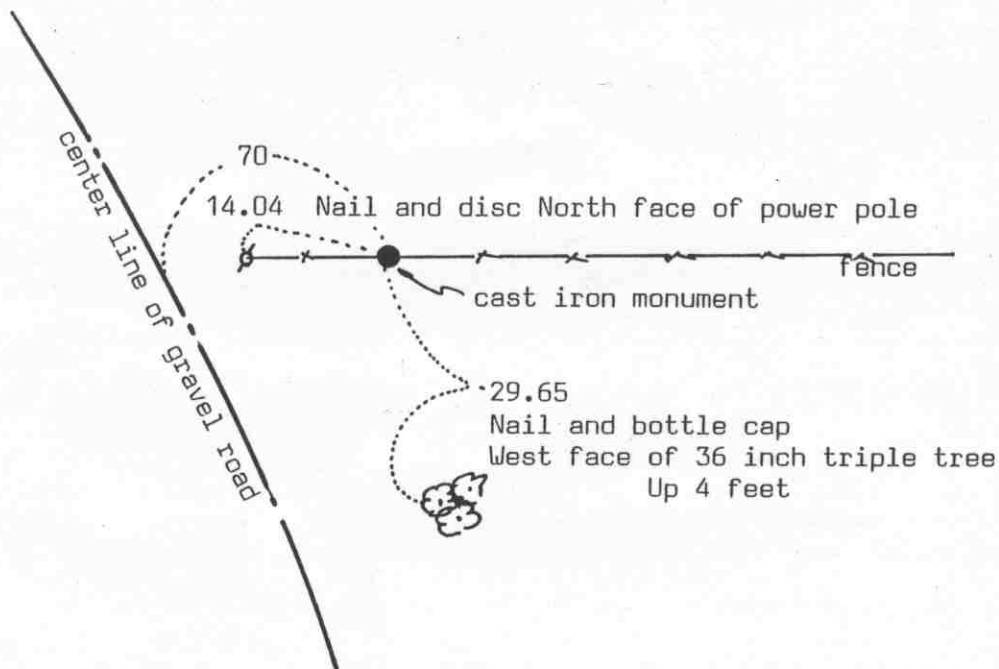
NORTHEAST corner, Section 1, Township 115 North, Range 29 West

# Certificate of Location of Government Corner

SKETCH OF REFERENCE TIES  
(NO SCALE)

SECTION 36  
T. 116 R. 29

SECTION 31  
T. 116 R. 28



SECTION 1  
T. 115 R. 29

SECTION 6  
T. 115 R. 28

Statement of evidence relative to this corner location on sheet 2

I hereby certify that this document was prepared by me or under my direct supervision.

Willard Pellinen

Willard Pellinen  
McLeod County Surveyor  
License No. 9626

Date March 19, 1993

OFFICE OF THE COUNTY RECORDER  
MCLEOD COUNTY, MINNESOTA.

I hereby certify that this document was filed in this office at 4 o'clock P. M. on the 27<sup>th</sup> day of July, 1993.

Carmen Ostlie Mulder, County Recorder

By \_\_\_\_\_, Deputy

Document No. 253813

## *Certificate of Location of Government Corner*

1855. This corner was originally established by John Ryan of the General Land Office. He set a post and marked an oak for a bearing tree.

September, 1969. Clarence Ondrachek, in the Northeast Quarter of Section 1, said there is an iron at the corner, near an iron post. Dickman Knutson, county surveyor, found iron rod beside an iron post and replaced it with a McLeod County cast iron monument. He took available reference ties.

February 5, 1993. We found no ties remaining. We found the monument in good condition along the east-west fence, and took new reference ties.

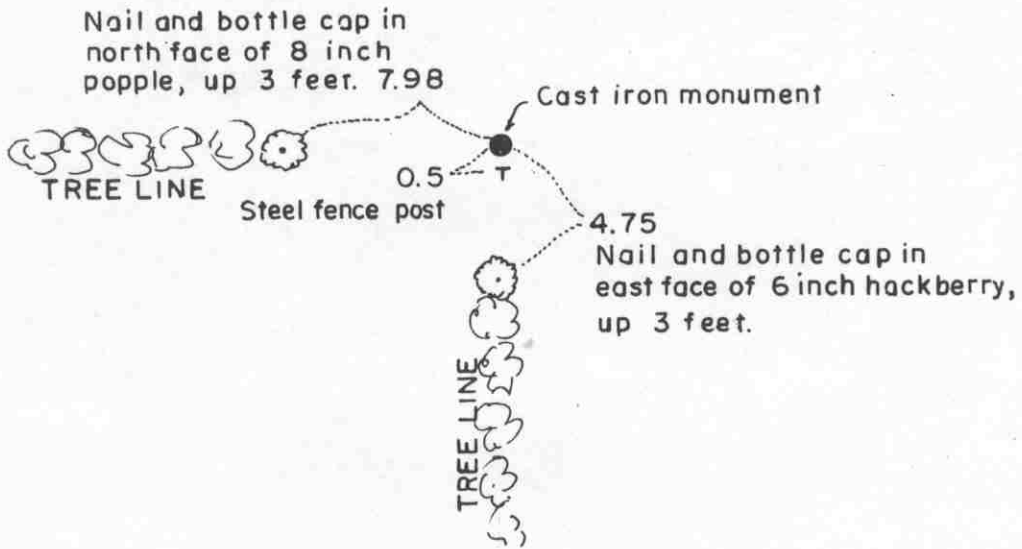
The monument set by Knutson is accepted as marking the correct location of the section corner. It fits long standing occupation lines and it replaces an older monument which had been accepted by adjoining land owners as the section corner.

# Certificate of Location of Government Corner

North Quarter corner, Section 6, Township 115 North, Range 28 West

SKETCH OF REFERENCE TIES (NO SCALE)

SECTION 31, T.116, R. 28



SECTION 6, T.115, R. 28

Statement of evidence relative to this corner location on sheet 2

I hereby certify that this document was prepared by me or under my direct supervision.

Willard Pellinen  
Willard Pellinen  
McLeod County Surveyor  
License No. 9626.

Date April 20, 1995

OFFICE OF THE COUNTY RECORDER  
MCLEOD COUNTY, MINNESOTA

I hereby certify that this document was filed in this office at 9 o'clock A M. on the 24th day of Apr 19 95.

Carmen Ostlie Mulder, County Recorder

By \_\_\_\_\_, Deputy.

Document No. 265313

**Certificate of Location of Government Corner**  
**North Quarter Corner, Section 6, Township 115 North, Range 28 West**

**1855. John Ryan of the General Land Office established this corner. He set a post and marked a 12 inch oak and a 10 inch oak for bearing trees.**

**September, 1969. Adjoining land owners agree the fence corner is the quarter corner. Dickman Knutson, county surveyor, set a McLeod County cast iron monument at the intersection, fences east, west and south and took available reference ties.**

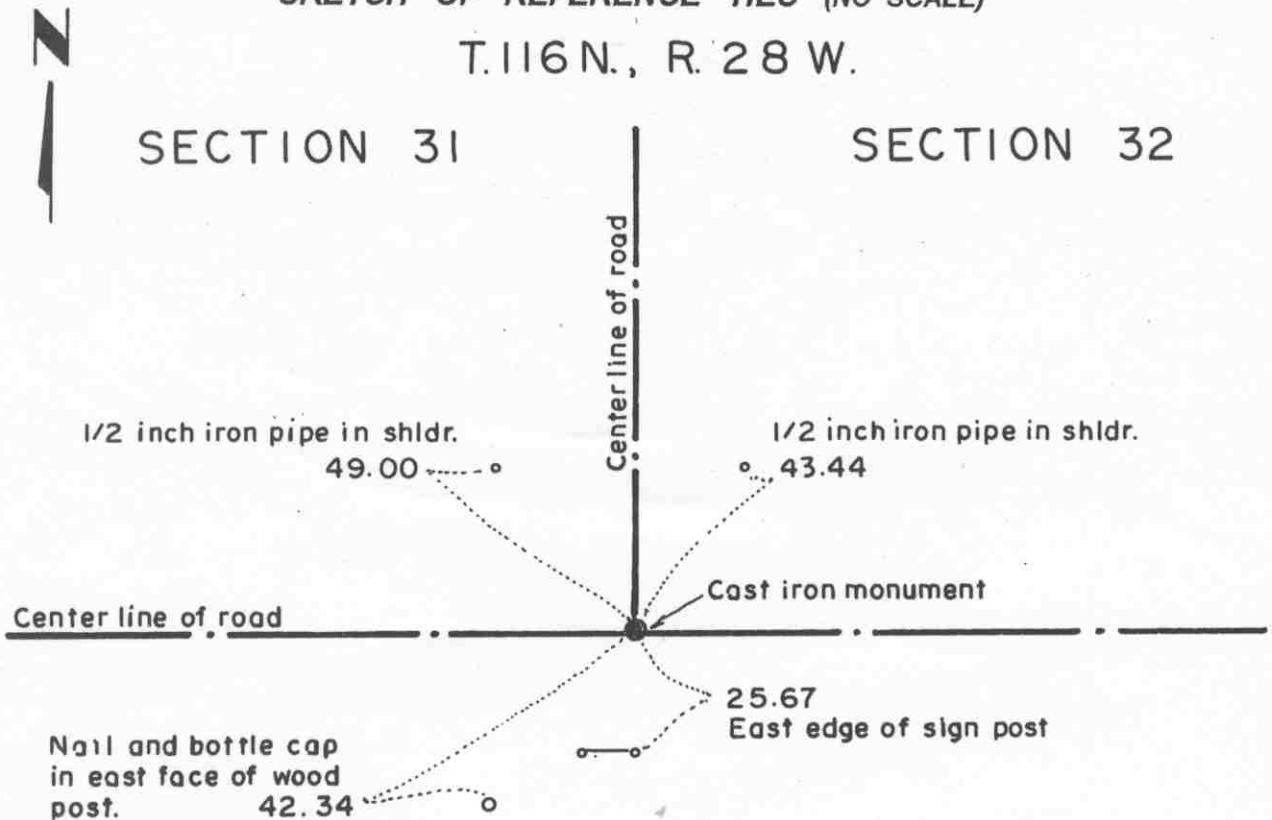
**February 1, 1995. We found the monument in good condition and took new available reference ties.**

# Certificate of Location of Government Corner

Northeast corner, Section 6, Township 115 North, Range 28 West

SKETCH OF REFERENCE TIES (NO SCALE)

T. 116 N., R. 28 W.



SECTION 6

SECTION 5

T. 115 N., R. 28 W.

Statement of evidence relative to this corner location on sheet 2

I hereby certify that this document was prepared by me or under my direct supervision.

Willard Pellinen  
Willard Pellinen  
McLeod County Surveyor  
License No. 9626.

Date Feb. 5, 1995

OFFICE OF THE COUNTY RECORDER  
MCLEOD COUNTY, MINNESOTA

I hereby certify that this document was filed in this office at 9 o'clock A. M. on the 6th day of February 19 95.

Carmen Kellie Mulder County Recorder

By \_\_\_\_\_, Deputy.

Document No. 264004



**Certificate of Location of Government Corner**  
**Northeast Corner, Section 6, Township 115 North, Range 28 West**

*1855. John Ryan of the General Land Office established this corner. He set a post and marked 3 aspens and a cherry tree for bearing trees.*

*1969. The center line intersection of the roads has been accepted by adjoining land owners as being the section corner.*

*September, 1969. Dickman Knutson, county surveyor, found a 1/2 inch iron pipe at the center line intersection, roads north, east and west and replaced it with a McLeod County cast iron monument. He took reference ties.*

*November 12, 1992. We found the monument in good condition down 4 inches below the surface of the road and took new ties.*

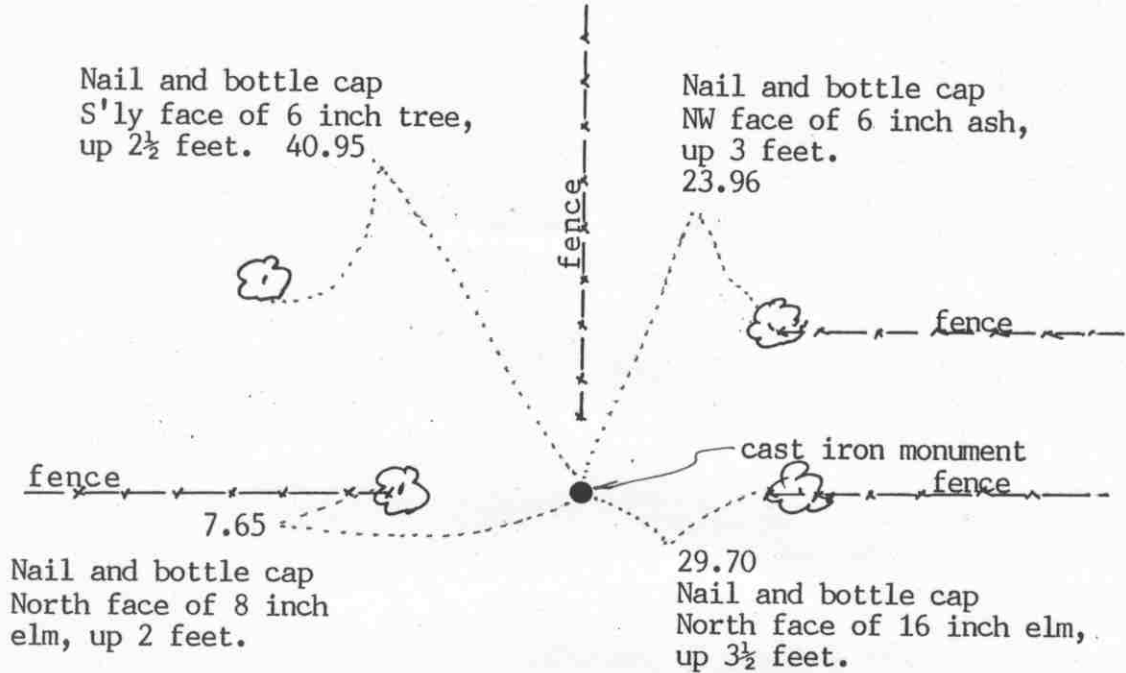
*The monument set by Knutson is accepted as marking the location of the government corner. It fits long standing occupation lines (the roads) and it perpetuates the location of an older monument.*

# Certificate of Location of Government Corner

## SKETCH OF REFERENCE TIES (NO SCALE)

SECTION 32

SECTION 33



Statement of evidence relative to this corner location on sheet 2

I hereby certify that this document was prepared by me or under my direct supervision.

Willard Pellinen

Willard Pellinen  
McLeod County Surveyor  
License No. 9626

Date December 23, 1993.

OFFICE OF THE COUNTY RECORDER  
MCLEOD COUNTY, MINNESOTA.

I hereby certify that this document was filed in this office at 9 o'clock A.M. on the 21st day of January, 1994.

Carmen Helvie Mulder, County Recorder

By \_\_\_\_\_, Deputy

Document No. 257388

EAST QUARTER corner, Section 32, Township 116 North, Range 28 West

## Certificate of Location of Government Corner

September, 1856. D. L. Langton of the General Land Office established this corner. He set a post and marked 2 oaks for bearing trees.

July 24, 1973. Dickman Knutson, county surveyor, set a McLeod County cast iron monument at the intersection of an east-west fence and the southerly prolongation of a fence from the north. Adjoining land owners have always accepted this location as marking the quarter corner. Mr. Ronald Nemec, 39 years old and had lived in the Northwest Quarter of Section 33 all his life, said he put in a wood fence post in the hole where the old corner fence post used to be.

This corner is about 43 feet south of a split and about 9 feet west of a straight line between the section corners.

December 13, 1993. We found no ties remaining. Found the top of the monument broken off, bottom in good condition. Took available ties to bottom of monument and set top of monument over the bottom section. Top is flush with the ground.

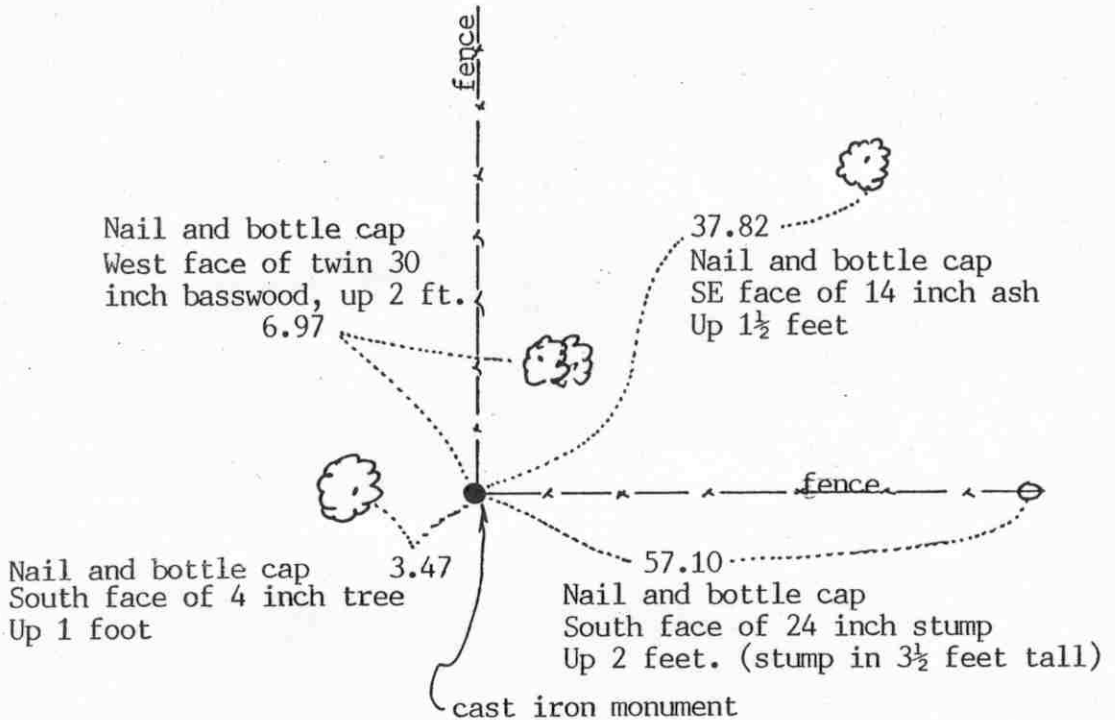
NORTHEAST corner, Section 32, Township 116 North, Range 28 West

# Certificate of Location of Government Corner

SKETCH OF REFERENCE TIES  
(NO SCALE)

SECTION 29

SECTION 28



SECTION 32

SECTION 33

Statement of evidence relative to this corner location on sheet 2

I hereby certify that this document was prepared by me or under my direct supervision.

Willard Pellinen

Willard Pellinen  
McLeod County Surveyor  
License No. 9626

Date Jan. 19, 1994.

OFFICE OF THE COUNTY RECORDER  
MCLEOD COUNTY, MINNESOTA.

I hereby certify that this document was filed in this office at 9 o'clock A. M. on the 19th day of January, 1994.

Carmen Ottilie Mulder, County Recorder

By \_\_\_\_\_, Deputy

Document No. 257387

NORTHEAST                      corner, Section 32, Township 116 North, Range 28 West

## Certificate of Location of Government Corner

September, 1856. D. L. Langton of the General Land Office established this corner. He set a post and marked 4 elms for bearing trees.

April 29, 1929. Field notes by E. L. Higgins, surveyor, show a forty year old fence running north from this corner.

July 24, 1973. Dickman Knutson, county surveyor, found a stone at the intersection of fences, north and east. He set a McLeod County cast iron monument at the corner and took available reference ties.. Leonard Blazinski, in the Northeast Quarter of Section 32, said the fences have been in the same place since the 1929 survey by Higgins.

December 13, 1993. We found the monument in good condition flush with the surface of the ground at the fence intersection. No old ties remaining so we took new available reference ties.

The monument set by Knutson is accepted as marking the section corner. It fits old occupation lines and it perpetuates the location of an older monument, the stone.

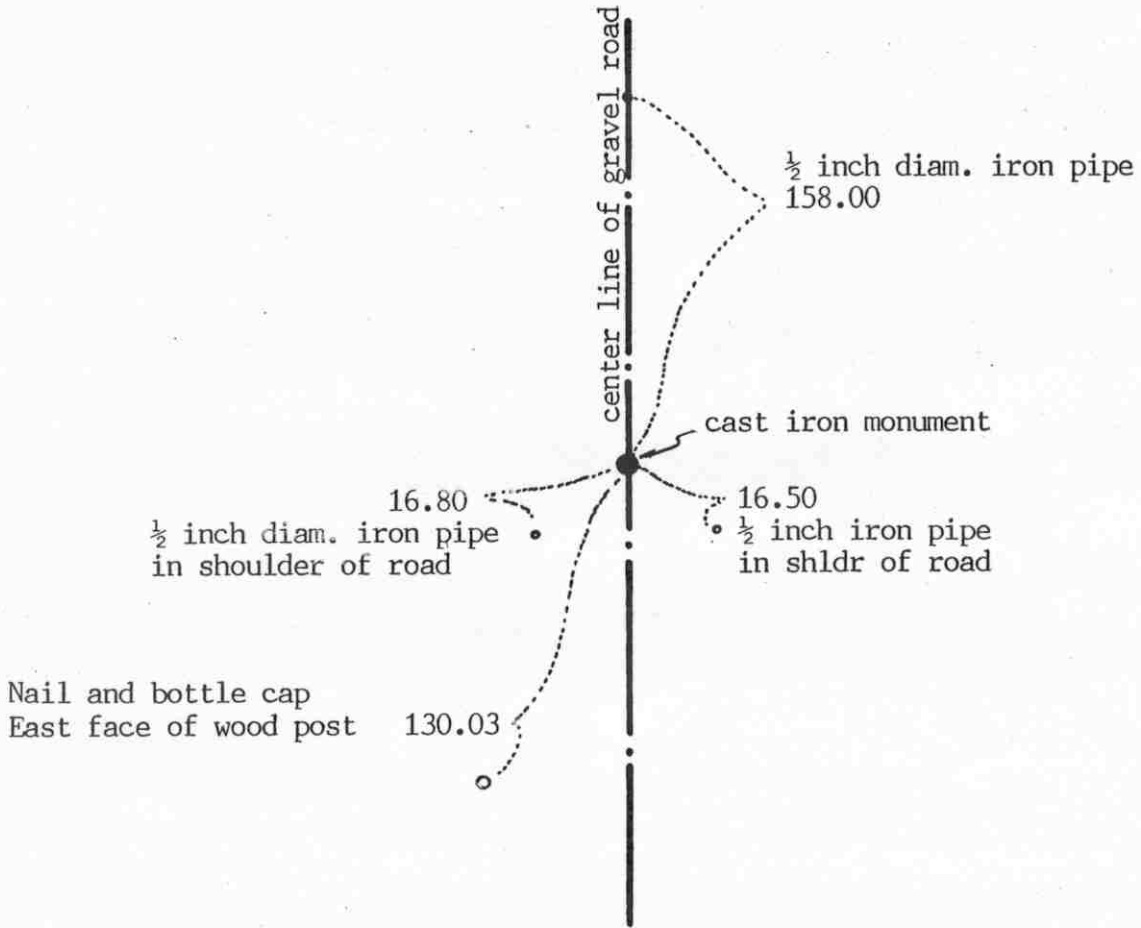
NORTH QUARTER corner, Section 32, Township 116 North, Range 28 West



# Certificate of Location of Government Corner

SKETCH OF REFERENCE TIES  
(NO SCALE)

SECTION 29



SECTION 32

Statement of evidence relative to this corner location on sheet 2

I hereby certify that this document was prepared by me or under my direct supervision.

Willard Pellinen  
Willard Pellinen  
McLeod County Surveyor  
License No. 9626

Date April 5, 1994

OFFICE OF THE COUNTY RECORDER  
MCLEOD COUNTY, MINNESOTA.

I hereby certify that this document was filed in this office at 9 o'clock A.M. on the 20th day of April, 1994.

Carmen Estelle Mulder, County Recorder

By \_\_\_\_\_, Deputy

Document No. 259050

## Certificate of Location of Government Corner

September, 1856. D. L. Langton of the General Land Office established this corner. He set a post and marked 2 elms for bearing trees.

No occupation lines or testimony or old records to help locate the north-south location of this corner. Gravel road runs north-south along approximate quarter line.

April, 1982. We ran a straight line between the northeast and northwest corners of Section 32 and set a temporary corner on the center line of the north-south road.

July 26, 1982. We dug for the corner, John Tupa from Hutchinson with a backhoe. We found a stone and rotted wood post down  $5\frac{1}{2}$  feet below the road surface. We left the stone in place and took available reference ties.

August 19, 1982. We set a McLeod County cast iron monument at the corner and took additional ties. This corner is .06 feet east of a split and 0.88 feet south of a straight line between the section corners. We also set a  $\frac{1}{2}$  inch diameter iron pipe below the cast iron monument.

December 13, 1993. We found the monument in good condition and checked the reference ties.

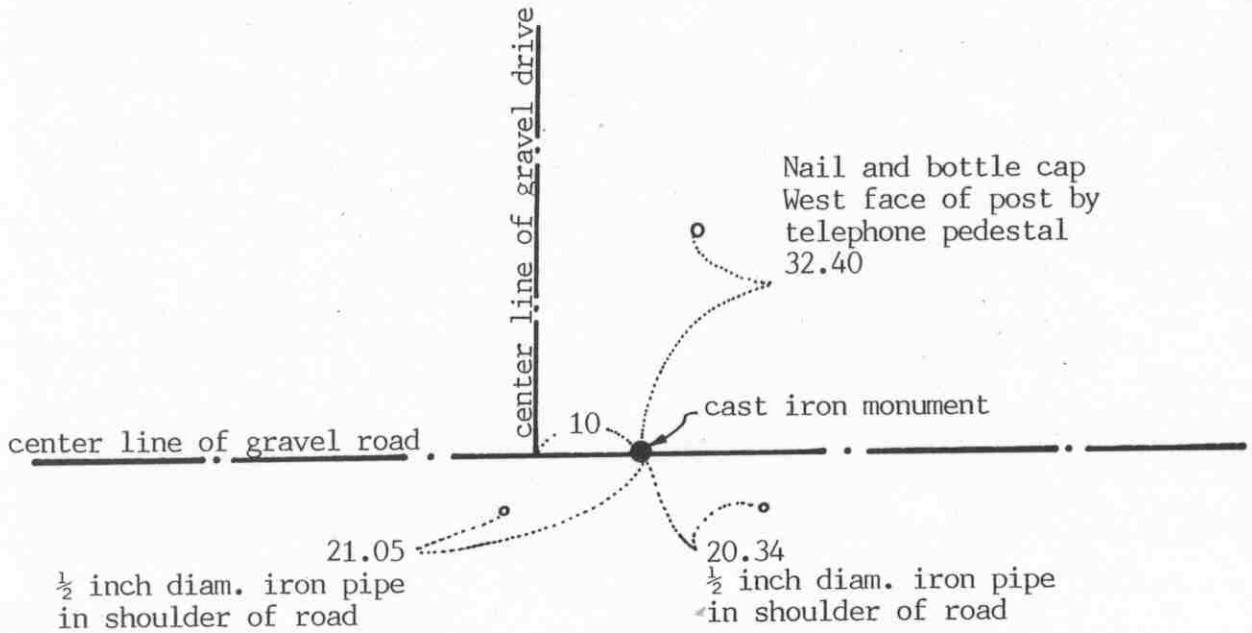
NORTH QUARTER corner, Section 5, Township 115 North, Range 28 West

# Certificate of Location of Government Corner

## SKETCH OF REFERENCE TIES

(NO SCALE)

SECTION 32, T.116, R. 28



SECTION 5, T.115, R. 28

Statement of evidence relative to this corner location on sheet 2

I hereby certify that this document was prepared by me or under my direct supervision.

Willard Pellinen  
Willard Pellinen  
McLeod County Surveyor  
License No. 9626

Date Nov. 14, 1992

OFFICE OF THE COUNTY RECORDER  
MCLEOD COUNTY, MINNESOTA.

I hereby certify that this document was filed in this office at 9 o'clock A.M. on the 20th day of November, 1992.

Carmen Estlie Mulder, County Recorder

By \_\_\_\_\_, Deputy

Document No. 248983



NORTH QUARTER corner, Section 5, Township 115 North, Range 28 West

## Certificate of Location of Government Corner

1855. John Ryan of the General Land Office originally established this corner. He set a post and marked a 10 inch and a 12 inch oak for bearing trees.

1970. McCombs Knutson Associates (Dickman Knutson, county surveyor) dug for the corner. They dug a hole 10 feet by 5 feet by 4 feet deep but found no evidence of the government corner. Knutson set a McLeod County cast iron monument on a proration of 1939 survey distances to the northeast and northwest corners of Section 5.

October 28, 1970. Knutson set cast iron monument.

November 12, 1992. We found no ties remaining. We found the monument in good condition down 8 inches below the surface and took new reference ties.

The monument set by Knutson is accepted as marking the quarter corner. We feel the location had been perpetuated by the 1939 survey distances.

NORTHEAST corner, Section 5, Township 115 North, Range 28 West

# Certificate of Location of Government Corner



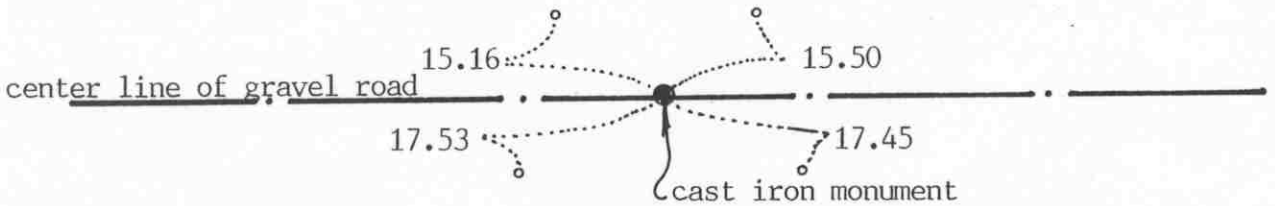
SKETCH OF REFERENCE TIES  
(NO SCALE)

SECTION 32

T. 116  
R. 28

SECTION 33

Ties are to  $\frac{1}{2}$  inch iron pipes in shldr of road



2636.86 feet to  $N\frac{1}{4}$  corner of Section 4  
2607.50 feet to  $E\frac{1}{4}$  corner of Section 32

SECTION 5

T. 115  
R. 28

SECTION 4

Statement of evidence relative to this corner location on sheet 2

I hereby certify that this document was prepared by me or under my direct supervision.

Willard Pellinen

Willard Pellinen  
McLeod County Surveyor  
License No. 9626

Date November 14, 1992

OFFICE OF THE COUNTY RECORDER  
MCLEOD COUNTY, MINNESOTA.

I hereby certify that this document was filed in this office at 9 o'clock A.M. on the 20th day of November, 19 92.

Barbara K. Melder County Recorder

By \_\_\_\_\_, Deputy

Document No. 248981

NORTHEAST            corner, Section 5, Township 115 North, Range 28 West

## Certificate of Location of Government Corner

1855. This corner was originally established by John Ryan of the General Land Office. He set a post and marked a 15 inch and a 13 inch linden for bearing trees.

February 28, 1931. E. L. Higgins, county surveyor, found a stone and a wood post at the corner.

August 1969. McCombs Knutson Associates (Dickman Knutson, county surveyor) found the stone and wood stake and took available ties.

October 28, 1970. Knutson set a McLeod County cast iron monument at the corner.

November 12, 1992. All the reference ties were destroyed so we took new ties. We found the monument in good condition down 6 inches below the road surface.

The monument set by Knutson is accepted as the location of the government corner. It fits occupation line (the center line of the east-west road) and it perpetuates the location of an older monument, the found stone.

East Quarter corner, Section 33, Township 116 North, Range 28 West

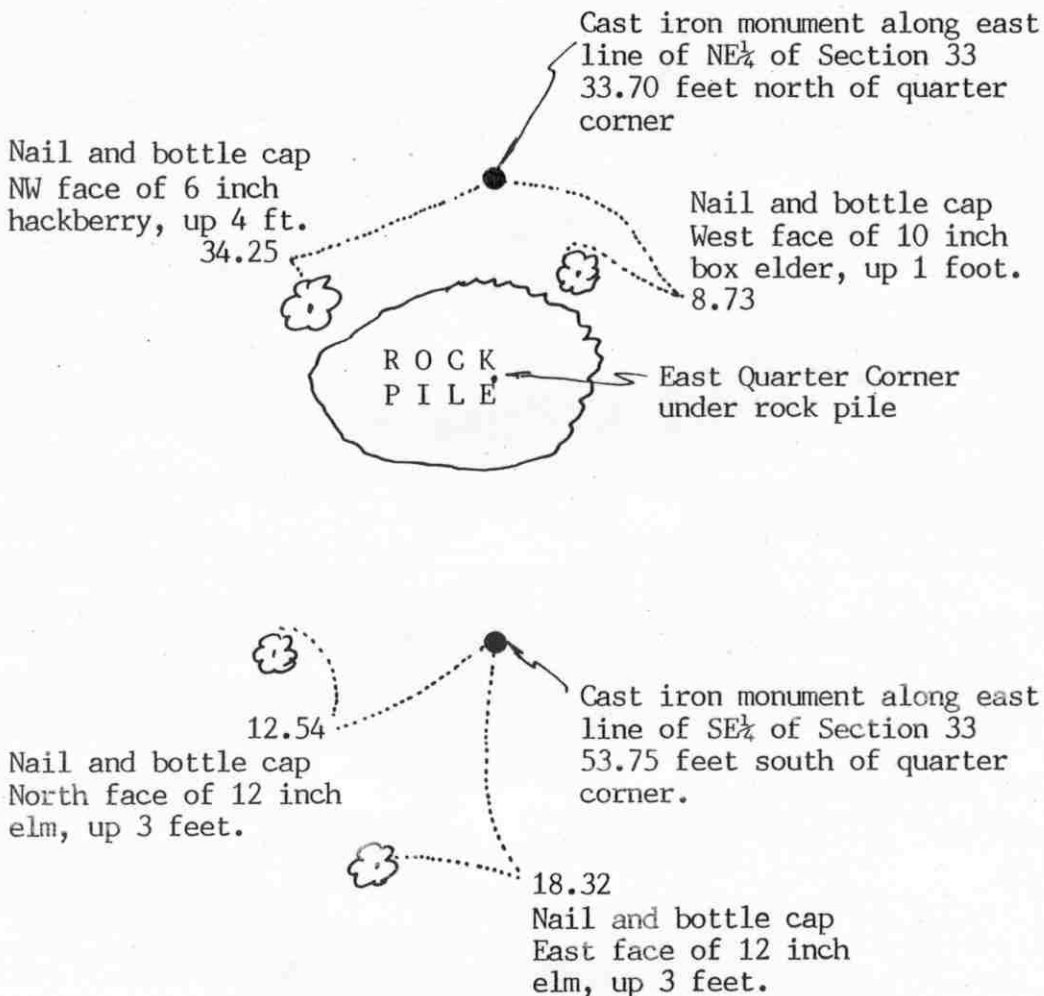
# Certificate of Location of Government Corner

## SKETCH OF REFERENCE TIES (NO SCALE)



SECTION 33

SECTION 34



Statement of evidence relative to this corner location on sheet 2

I hereby certify that this document was prepared by me or under my direct supervision.

Willard Pellinen

Willard Pellinen  
McLeod County Surveyor  
License No. 9626

Date April 5, 1994.

OFFICE OF THE COUNTY RECORDER  
MCLEOD COUNTY, MINNESOTA.

I hereby certify that this document was filed in this office at 9 o'clock A.M. on the 20th day of April, 1994.

Carmen Estelle Mulder, County Recorder

By \_\_\_\_\_, Deputy

Document No. 259051

## Certificate of Location of Government Corner

September, 1856. D. L. Langton of the General Land Office established this corner. He set a post and marked a cherry tree and an aspen for bearing trees.

January 15, 1986. Mr. Alan Chastek, who had lived in the Northeast Quarter of Section 33 all his life, and the farm has been in the Chastek family for 4 generations, said the quarter corner location is under a large rock pile. He said the field lines running north and south of the rock pile have always been accepted as being along the section line. Power pole line west of the rock pile is along the east-west quarter line of Section 33.

January 16, 1986. We measured the east line of Section 33 and located occupation lines along the east-west quarter line and set the quarter corner at the intersection of the field lines and the easterly extension of the power pole line. This fell in the large rock pile.

July 21, 1986. We set a cast iron monument 33.70 feet north of the quarter corner along the east line of the Northeast Quarter and a cast iron monument 53.75 feet south of the quarter corner along the east line of the Southeast Quarter of Section 33, and took reference ties to the monuments. The quarter corner falls half way between the section corners and 6.8 feet east of a straight line between the section corners.

December 13, 1993. We found the reference monuments in good condition and checked the ties to the monuments.

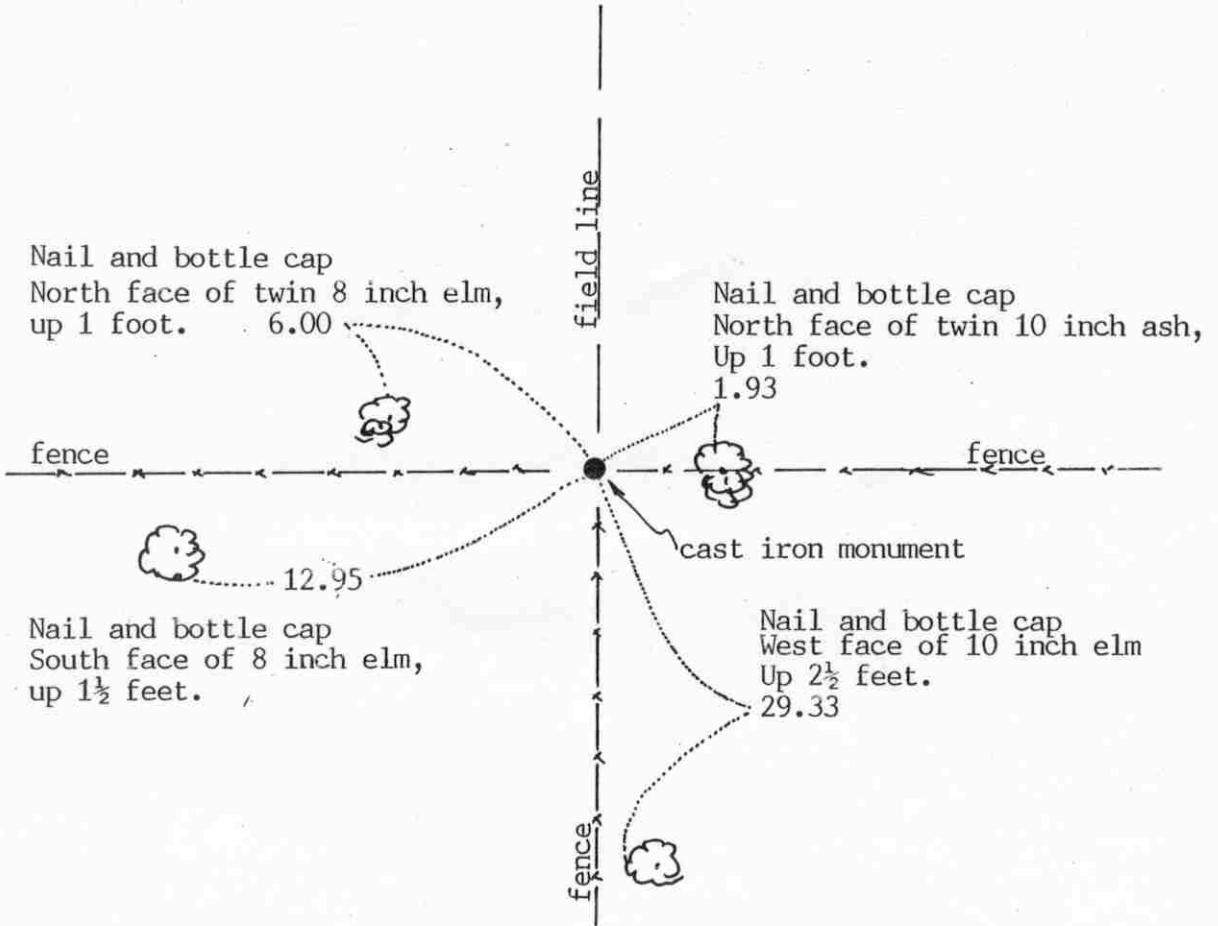
NORTHEAST corner, Section 33, Township 116 North, Range 28 West

# Certificate of Location of Government Corner

SKETCH OF REFERENCE TIES  
(NO SCALE)

SECTION 28

SECTION 27



SECTION 33

SECTION 34

Statement of evidence relative to this corner location on sheet 2

I hereby certify that this document was prepared by me or under my direct supervision.

Willard Pellinen

Willard Pellinen  
McLeod County Surveyor  
License No. 9626

Date January 19, 1994

OFFICE OF THE COUNTY RECORDER  
MCLEOD COUNTY, MINNESOTA.

I hereby certify that this document was filed in this office at 9 o'clock A.M. on the 19th day of January, 1994.

Carmen Ottilie Mulder, County Recorder

By \_\_\_\_\_, Deputy

Document No. 257389

NORTHEAST \_\_\_\_\_ corner, Section 33, Township 116 North, Range 28 West

## *Certificate of Location of Government Corner*

September, 1856. D. L. Langton of the General Land Office set a post and marked 4 aspens for bearing trees.

Adjoining land owners have accepted the fence intersection, fences east, west and south, field line to the north, as being the section corner.

No old county records found on this corner.

June 27, 1979. We found an iron pipe at the fence intersection and replaced it with a McLeod County cast iron monument.

December 13, 1993. We found the monument in good condition down 12 inches below the surface. We took new available reference ties. All old ties had been destroyed.

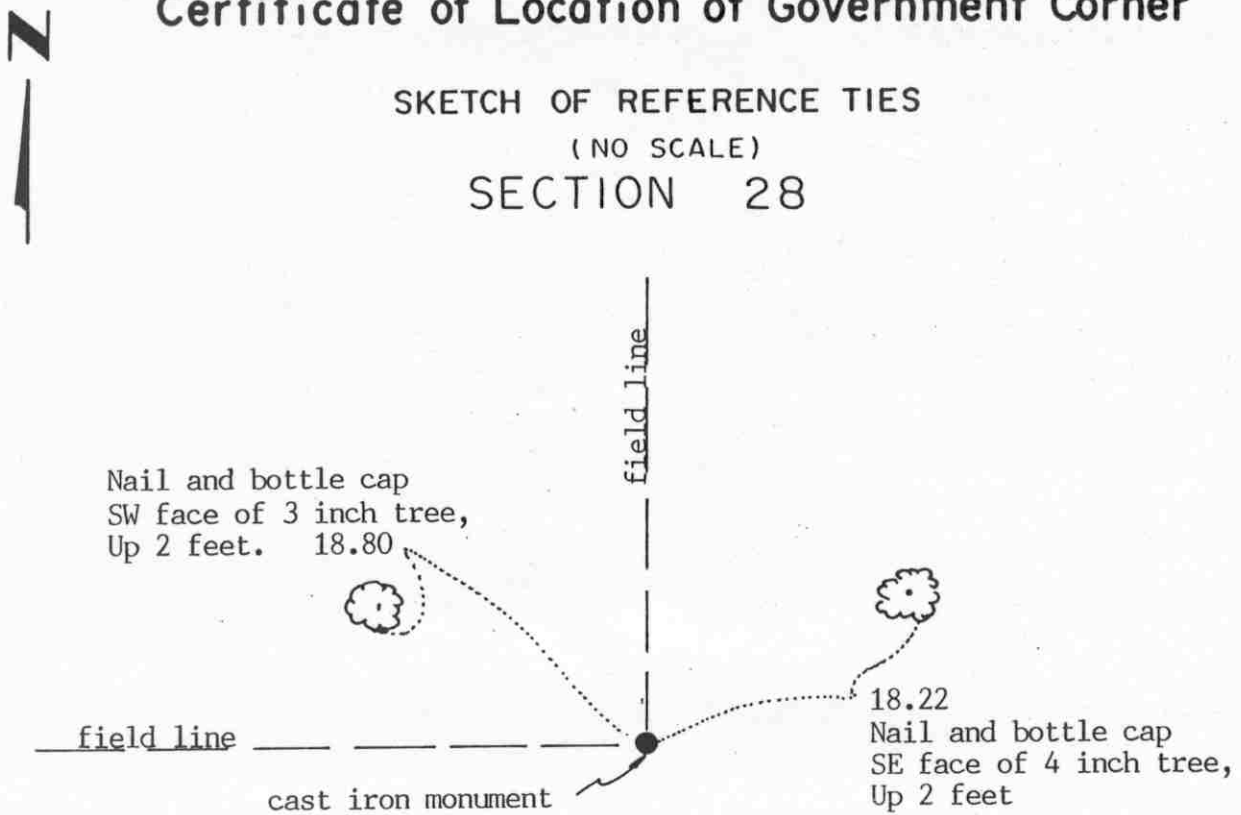
NORTH QUARTER corner, Section 33, Township 116 North, Range 28 West

# Certificate of Location of Government Corner

## SKETCH OF REFERENCE TIES

(NO SCALE)

### SECTION 28



### SECTION 33

Statement of evidence relative to this corner location on sheet 2

I hereby certify that this document was prepared by me or under my direct supervision.

Willard Pellinen

Willard Pellinen  
McLeod County Surveyor  
License No. 9626

Date Jan. 19, 1994.

OFFICE OF THE COUNTY RECORDER  
MCLEOD COUNTY, MINNESOTA.

I hereby certify that this document was filed in this office at 9 o'clock A.M. on the 11st day of January, 1994.

Carmen Estelle Mulder County Recorder

By \_\_\_\_\_, Deputy

Document No. 257390



## *Certificate of Location of Government Corner*

September, 1856. D. L. Langton of the General Land Office established this corner. He set a post and marked a 10 inch elm and an 8 inch walnut for bearing trees.

November 9, 1981. Mr. Albert Schermann, 58 years old and has lived in the Southeast Quarter of Section 28 since 1949, said the east-west field line is along the north line of Section 33.

December 1, 1983. Mr. Benno Roehl, who has lived in Section 33 for 23 years also said the field line is where the old fence used to be. He said the ditch running north is on the north-south quarter line of Section 28 .

December 13, 1983. We measured the north line of Section 33 and set a temporary corner along the field line on the center line of the north south ditch.

June 5, 1984. We set a McLeod County cast iron monument along the east-west field line in line with the ditch. This falls half way between the section corners and about 20 feet south of a straight line between the section corners. Centers of Sections 28 and 33, by occupation, fall within a few feet of being on the north-south quarter lines.

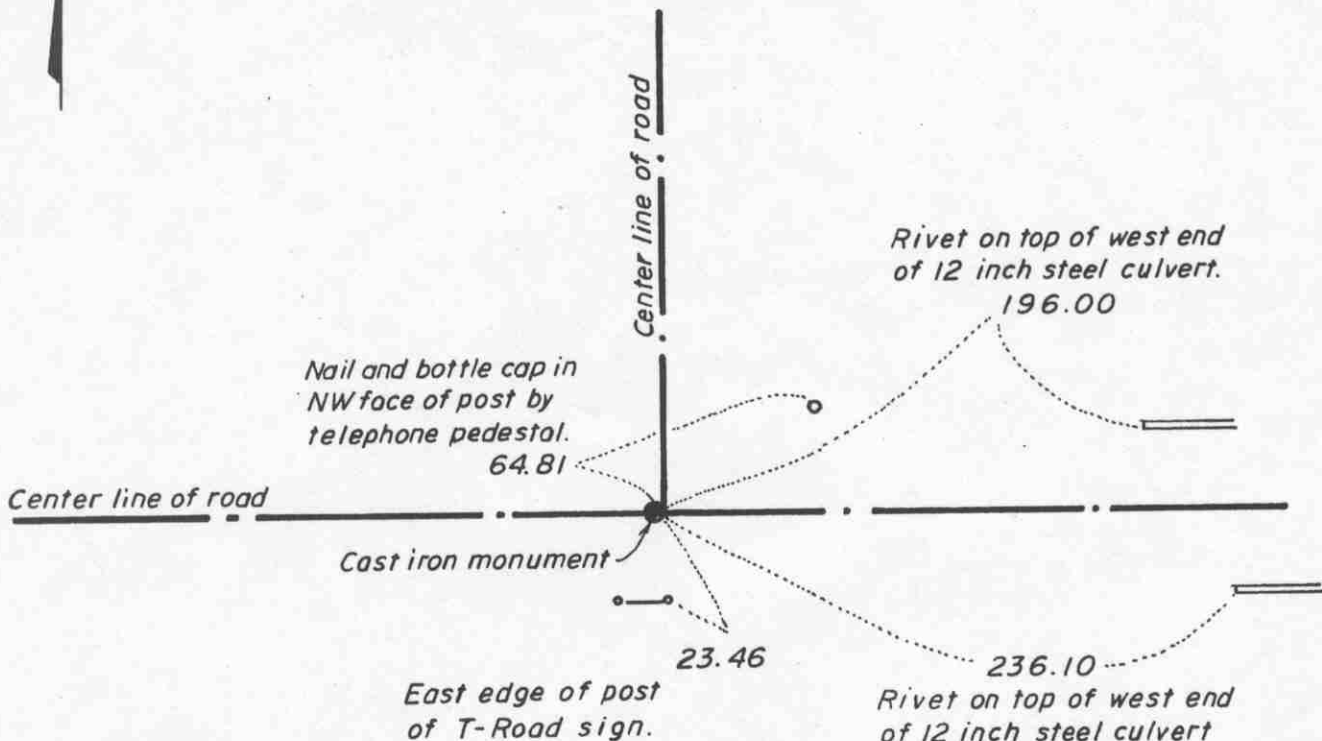
December 13, 1993. We found the cast iron monument in good condition 18 inches below the surface. No old ties remaining so we took new available ties.

# Certificate of Location of Government Corner

North Quarter corner, Section 4, Township 115 North, Range 28 West

SKETCH OF REFERENCE TIES (NO SCALE)

SECTION 33, T.116, R. 28



SECTION 4, T.115, R. 28

Statement of evidence relative to this corner location on sheet 2

I hereby certify that this document was prepared by me or under my direct supervision.

Willard Pellinen  
Willard Pellinen  
McLeod County Surveyor  
License No. 9626.

Date April 20, 1995

OFFICE OF THE COUNTY RECORDER  
MCLEOD COUNTY, MINNESOTA

I hereby certify that this document was filed in this office at 9 o'clock A M. on the 24th day of Apr 19 95.

Carman Dot Lie Mulder, County Recorder

By \_\_\_\_\_, Deputy.

Document No. 265312

**Certificate of Location of Government Corner**  
**North Quarter Corner, Section 4, Township 115 North, Range 28 West**

**1855. John Ryan of the General Land Office established this corner. He set a post and marked a 15 inch linden and a 13 inch linden for bearing trees.**

**1969. Adjoining land owners have accepted the center line intersection of the roads as being the quarter corner. Dickman Knutson, county surveyor, excavated for the corner at the center line intersection but found no evidence of the government corner.**

**October 27, 1970. Knutson set a McLeod County cast iron monument at the intersection of the center lines. This is very near to a point half way between the section corners, and within a half foot of 1929 survey distances to the section corners. Knutson took available reference ties.**

**February 1, 1995. We found the monument in good condition down 8 inches below the surface of the gravel road and took new available ties.**

# Certificate of Location of Government Corner

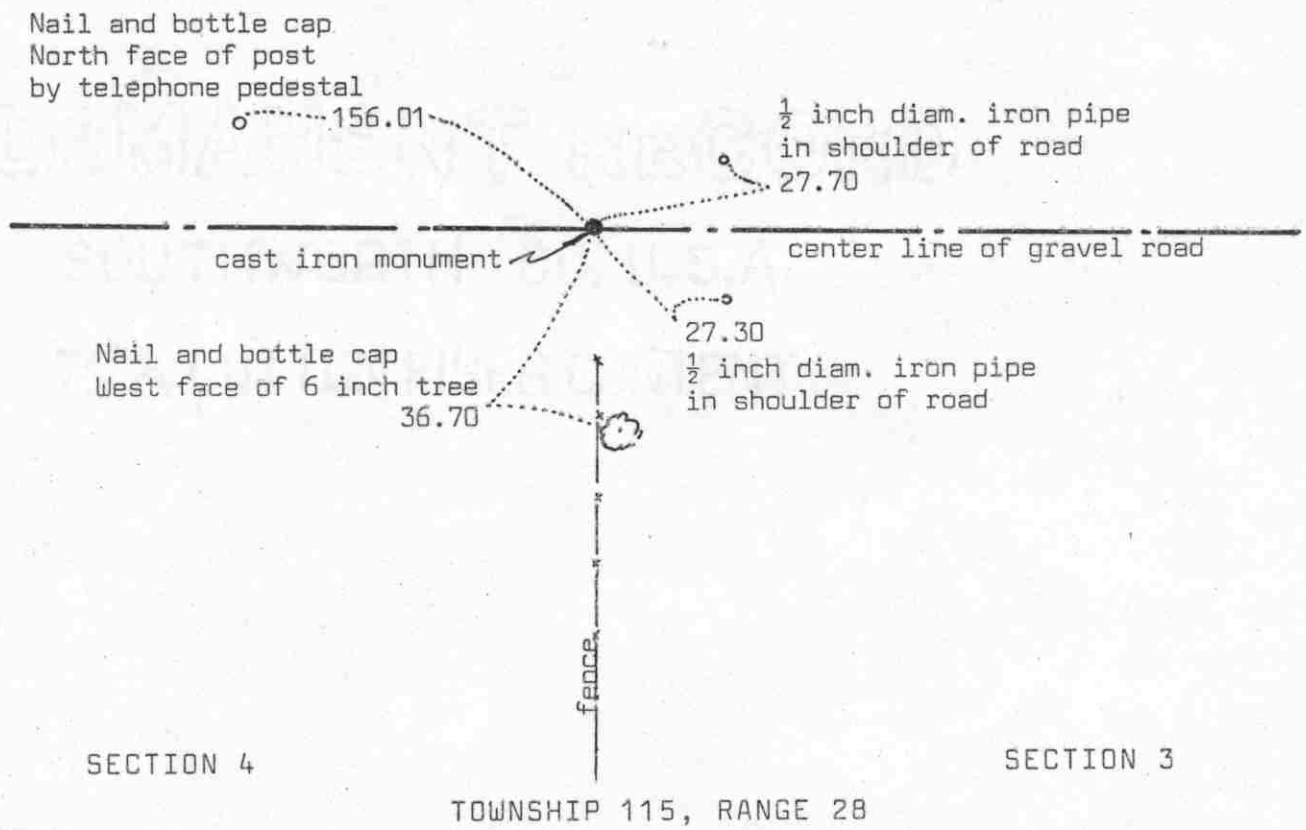
SKETCH OF REFERENCE TIES  
(NO SCALE)



TOWNSHIP 116, RANGE 28

SECTION 33

SECTION 34



Statement of evidence relative to this corner location on sheet 2

I hereby certify that this document was prepared by me or under my direct supervision.

Willard Pellinen  
Willard Pellinen  
McLeod County Surveyor  
License No. 9626  
Date 3/31/90

OFFICE OF THE COUNTY RECORDER  
MCLEOD COUNTY, MINNESOTA.

I hereby certify that this document was filed in this office at 4 o'clock P.M. on the 4th day of April, 1990.

Armen Ostlie, County Recorder  
By \_\_\_\_\_, Deputy  
Document No. 232656

NORTHEAST corner, Section 4, Township 115 North, Range 28 West

## Certificate of Location of Government Corner

This corner was originally established by John Ryan of the General Land Office in 1855. He set a post and had reference ties to 3 bearing trees.

April 9, 1929. E.L.Higgins measured 2636.5 feet between this corner and the north quarter corner of Section 4.

September 11, 1969. McCombs Knutson Associates, Dickman Knutson, county surveyor, set a temporary corner on the center line of the gravel road in line with a fence to the south.

May, 1970. Knutson dug for the corner and found a stone set on end down 3 feet below the road surface. They set a McLeod County cast iron monument and took reference ties.

January 16, 1986. We found the cast iron monument in good condition. Reference ties destroyed so we retied the corner.

December 1987. We measured the north line of Section 4 and had a distance of 2636.86 feet to the north quarter corner compared with 2636.5 by Higgins in 1929.

March 15, 1989. We found the monument in good condition and the reference ties good.

We accept the cast iron monument as the correct location of the section corner because it perpetuates the position of an older monument (stone), fits the occupation lines and agrees with the 1929 distance to the north quarter corner.

EAST QUARTER corner, Section 34, Township 116 North, Range 28 West

# Certificate of Location of Government Corner

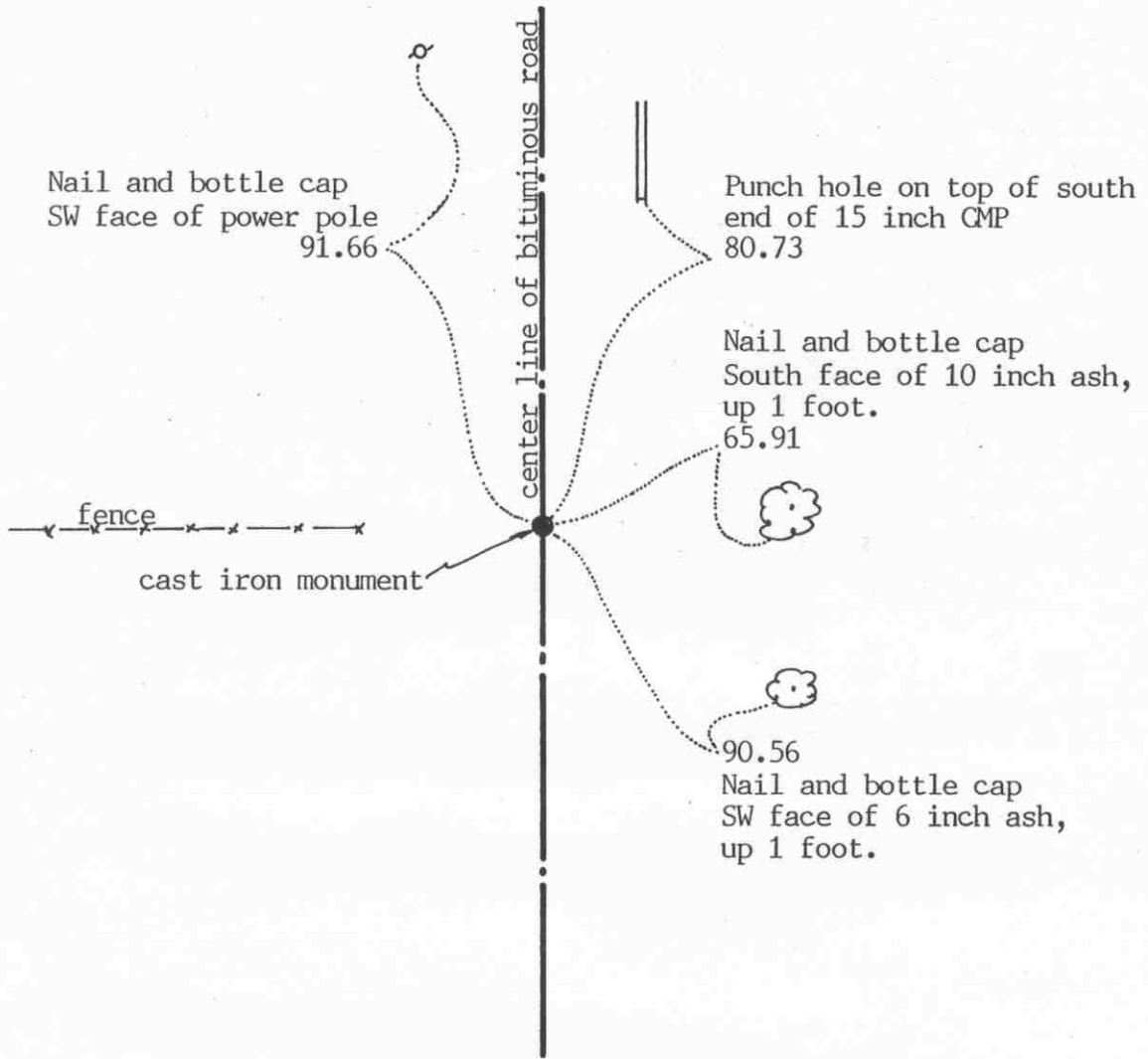
## SKETCH OF REFERENCE TIES

(NO SCALE)



SECTION 34

SECTION 35



Statement of evidence relative to this corner location on sheet 2

I hereby certify that this document was prepared by me or under my direct supervision.

Willard Pellinen

Willard Pellinen  
McLeod County Surveyor  
License No. 9626

Date December 23, 1993.

OFFICE OF THE COUNTY RECORDER  
MCLEOD COUNTY, MINNESOTA.

I hereby certify that this document was filed in this office at 9 o'clock A. M. on the 21st day of January, 19 94.

Carmen Helie Mulder, County Recorder

By \_\_\_\_\_, Deputy

Document No. 257392

EAST QUARTER corner, Section 34, Township 116 North, Range 28 West

## *Certificate of Location of Government Corner*

September, 1856. D. L. Langton of the General Land Office set a post and marked an oak and an aspen for bearing trees.

1938. County Highway Department assumed the corner at the center line of the north-south road.

Adjoining land owners say the corner is in the center line of the road in line with a fence to the west.

1978. Dickman Knutson, county surveyor, dug for the corner but found no evidence of the corner.

April 11, 1980. We set a PK nail on the center line of the road in line with the fence to the west and took available reference ties.

July 14, 1980. We set a McLeod County cast iron monument at the corner.

October 26, 1993. Found the monument in good condition and took new reference ties.

NORTHEAST corner, Section 34, Township 116 North, Range 28 West

# Certificate of Location of Government Corner

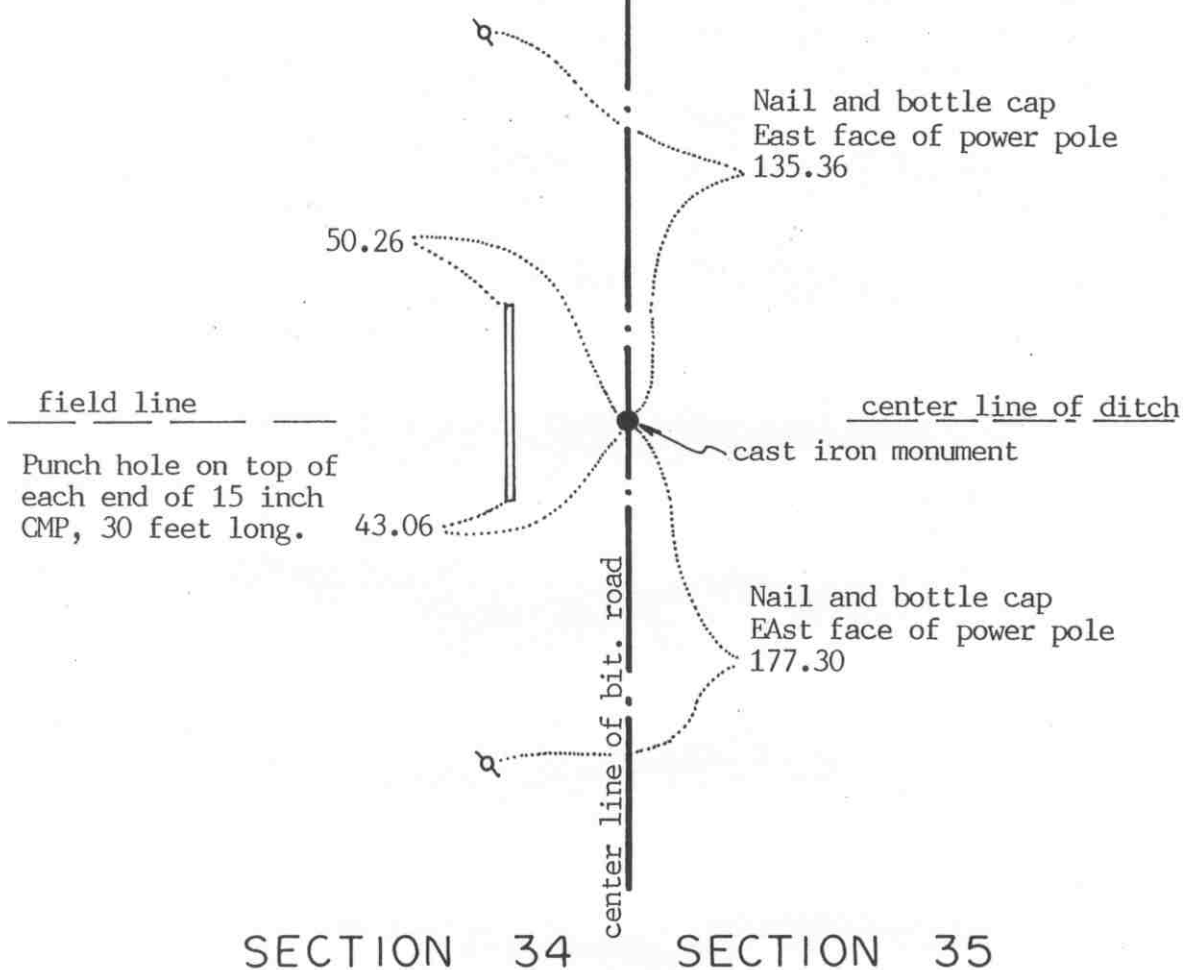
## SKETCH OF REFERENCE TIES

(NO SCALE)



SECTION 27

SECTION 26



SECTION 34

SECTION 35

Statement of evidence relative to this corner location on sheet 2

I hereby certify that this document was prepared by me or under my direct supervision.

Willard Pellinen

Willard Pellinen  
McLeod County Surveyor  
License No. 9626

Date December 23, 1993.

OFFICE OF THE COUNTY RECORDER  
MCLEOD COUNTY, MINNESOTA.

I hereby certify that this document was filed in this office at 9 o'clock A. M. on the 21st day of January, 1994.

Carmen Odette Mulder, County Recorder

By \_\_\_\_\_, Deputy

Document No. 257391



NORTHEAST \_\_\_\_\_ corner, Section 34, Township 116 North, Range 28 West

## Certificate of Location of Government Corner

September, 1856. D. L. Langton of the General Land Office established this corner. He set a post and marked 4 aspens for bearing trees.

1938. The county highway department assumed the corner and set an oak hub.

Adjoining land owners have accepted the center line of the north-south road at the extension of the center line of a ditch from the east and a field line to the west as being the section corner.

March 9, 1978. Dickman Knutson, county surveyor, set a temporary corner on the center line of the road in line with the center line of the ditch and the field line.

Knutson dug for the corner but found nothing but a 6 inch spike, which they tied off.

April 11, 1980. We set a PK nail on the center line of the road on a proration of the 1938 highway distances to the north and south. This fell very close to the location of the spike found by Knutson.

July 14, 1980. We set a McLeod County cast iron monument and took reference ties.

October 26, 1993. We found the monument in good condition down 6 inches below the surface of the bituminous road and took new reference ties.

# Certificate of Location of Government Corner



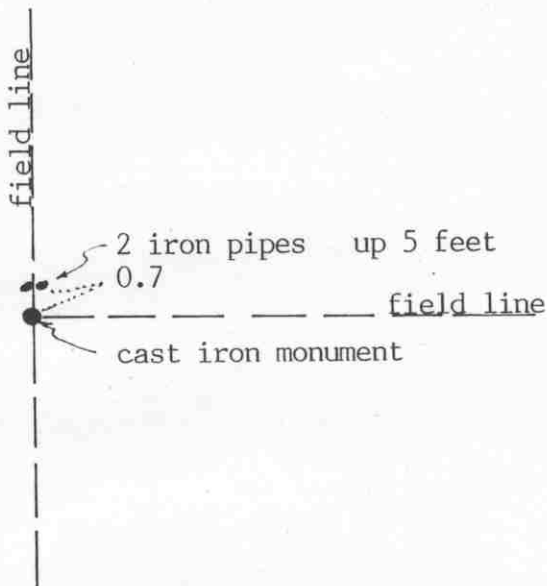
SKETCH OF REFERENCE TIES  
(NO SCALE)

SECTION 27

Monument is 13.54 feet north of a straight line between section corners.

2630.86 feet to the northwest corner of Section 34.

2636.32 feet to the northeast corner of Section 34.



SECTION 34

Statement of evidence relative to this corner location on sheet 2

I hereby certify that this document was prepared by me or under my direct supervision.

Willard Pellinen

Willard Pellinen  
McLeod County Surveyor  
License No. 9626

Date February 6, 1991

OFFICE OF THE COUNTY RECORDER  
MCLEOD COUNTY, MINNESOTA.

I hereby certify that this document was filed in this office at 9 o'clock A.M. on the 7th day of Feb, 1991.

Carmin Ostlie, County Recorder

By \_\_\_\_\_, Deputy

Document No. 237433

North Quarter corner, Section 34, Township 116 North, Range 28 West

## Certificate of Location of Government Corner

This corner was originally set by the government in September, 1856. D.L.Langton "set quarter section post in mound, dug trench, deposited charcoal as per instructions."

October 22, 1985. We measured the north line of Section 34 and found a 1 inch diameter iron pipe at the intersection of field lines. Field lines north, south and east. The adjoining property owners say this is the correct corner. Corner falls within 3 feet of being halfway between the section corners and about  $13\frac{1}{2}$  feet north of a straight line.

November 7, 1985. We replaced the iron pipe with a McLeod County cast iron monument.

There being no evidence to the contrary, we accept the found iron pipe as having perpetuated the correct location of the quarter corner.

April 10, 1990. We found the monument in good condition and checked the reference ties.

# Certificate of Location of Government Corner



SKETCH OF REFERENCE TIES

(NO SCALE)

SECTION 34, T 116, R 28

Nail and bottle cap  
East face of guy pole  
24.91

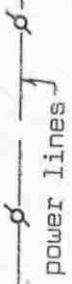
center line of gravel road

cast iron monument

32.36  
Nail and bottle cap  
East face of power pole

351.51

Nail and bottle cap  
North face of power pole



SECTION 3, T. 115, R. 28

Statement of evidence relative to this corner location on sheet 2

I hereby certify that this document was prepared by me or under my direct supervision.

Willard Pellinen

Willard Pellinen  
McLeod County Surveyor  
License No. 9626

Date 3/31/90

OFFICE OF THE COUNTY RECORDER  
MCLEOD COUNTY, MINNESOTA.

I hereby certify that this document was filed in this office at 4 o'clock P.M. on the 4th day of April, 1990.

Carmen Potlie, County Recorder

By \_\_\_\_\_, Deputy

Document No. 232657

## Certificate of Location of Government Corner

This corner was originally established by the General Land Office in 1855. John Ryan set a post and had a reference tie to 1 bearing tree.

January 11, 1969. McCombs Knutson Associates, Dickman Knutson, county surveyor, set a temporary corner on the center line of the road in line with a power line to the south.

February, 1970. Henry Zajacek, 70+ years old, in the Southwest Quarter of Section 34 for 66 years and Ernest Alsleben, in the Northeast Quarter of Section 3 both say the center line of the road and power line to the south are on the section and quarter line.

May, 1970. Knutson dug for the corner and found a stone with an iron pin below it. They set a McLeod County cast iron monument and took reference ties.

March 15, 1989. We found the cast iron monument down 4 inches below the road surface but no reference ties remaining. We took available ties.

This monument is within 0.4 foot of being half way between the section corners and about 13 feet south of a straight line between the section corners.

The cast iron monument is accepted as the correct corner location because it perpetuates the position of the older monument which we feel has perpetuated the location of the true corner.

# Certificate of Location of Government Corner

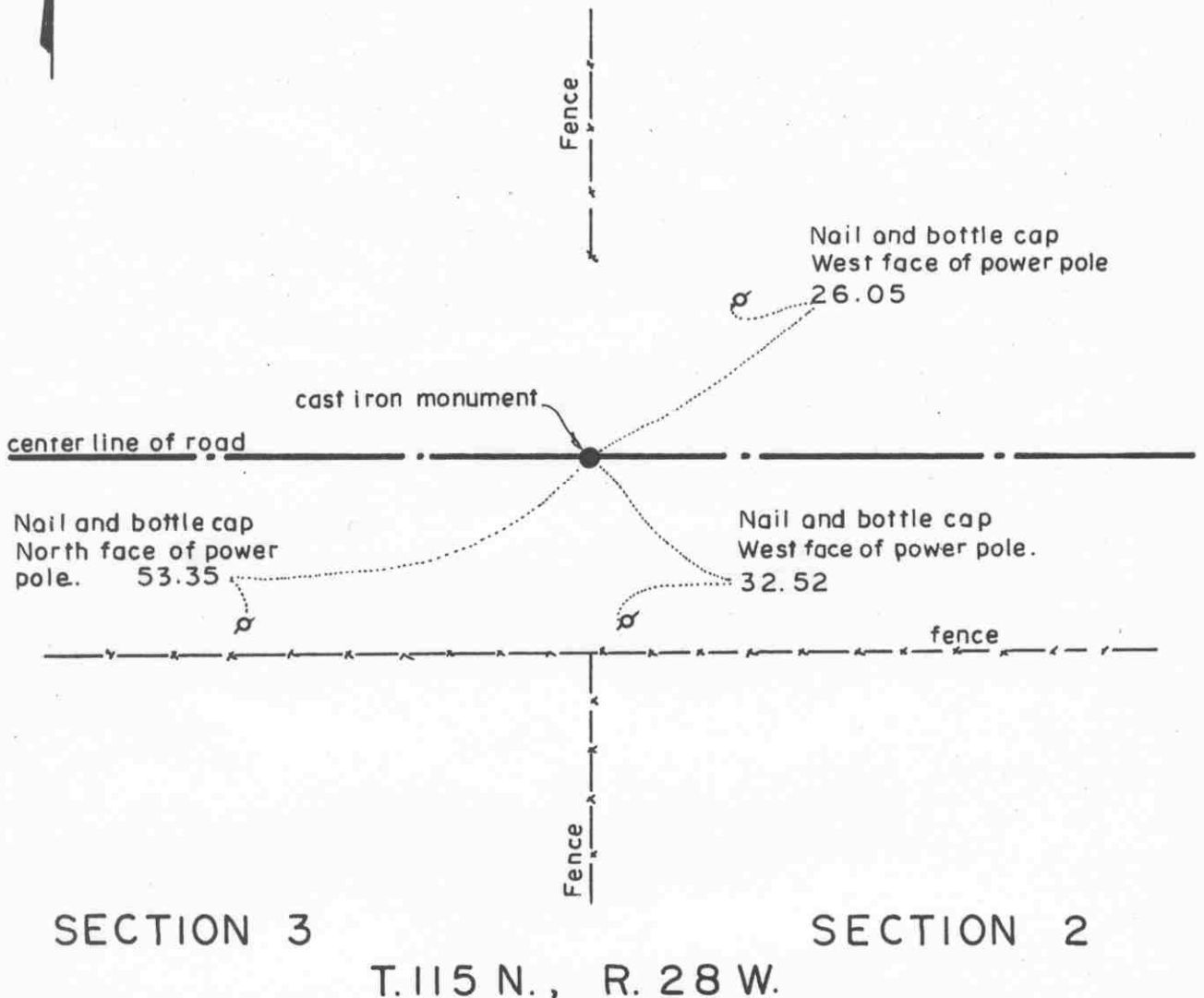
Northeast corner, Section 3, Township 115 North, Range 28 West

SKETCH OF REFERENCE TIES (NO SCALE)

T. 116 N., R. 28

SECTION 34

SECTION 35



## Statement of evidence relative to this corner location on sheet 2

I hereby certify that this document was prepared by me or under my direct supervision.

Willard Pellinen  
Willard Pellinen  
McLeod County Surveyor  
License No. 9626.

Date Feb. 3, 1995

OFFICE OF THE COUNTY RECORDER  
MCLEOD COUNTY, MINNESOTA

I hereby certify that this document was filed in this office at 9 o'clock A. M. on the 6th day of February, 19 95.

Carmen Obelia Mulder County Recorder

By \_\_\_\_\_, Deputy.

Document No. 264002

**Certificate of Location of Government Corner**  
**Northeast Corner, Section 3, Township 115 North, Range 28 West**

**1855. John Ryan of the General Land Office established this corner. He set a post, deposited charcoal, dug pits and trench, built mound and planted osage orange seeds at the corners of the mound.**

**1969. Dickman Knutson, county surveyor, dug for the corner. He found a stone in the center line of the east-west road in line with a fence to the north and a fence to the south. Adjoining land owners have accepted this location as being the section corner. Knutson set a McLeod County cast iron monument.**

**Janury 13, 1995. We checked the reference ties to the monument.**

**The monument set by Knutson is accepted as marking the location of the government corner. It fits long standing occupation lines and it perpetuates the location of an older monument.**

EAST QUARTER corner, Section 35, Township 116 North, Range 28 West

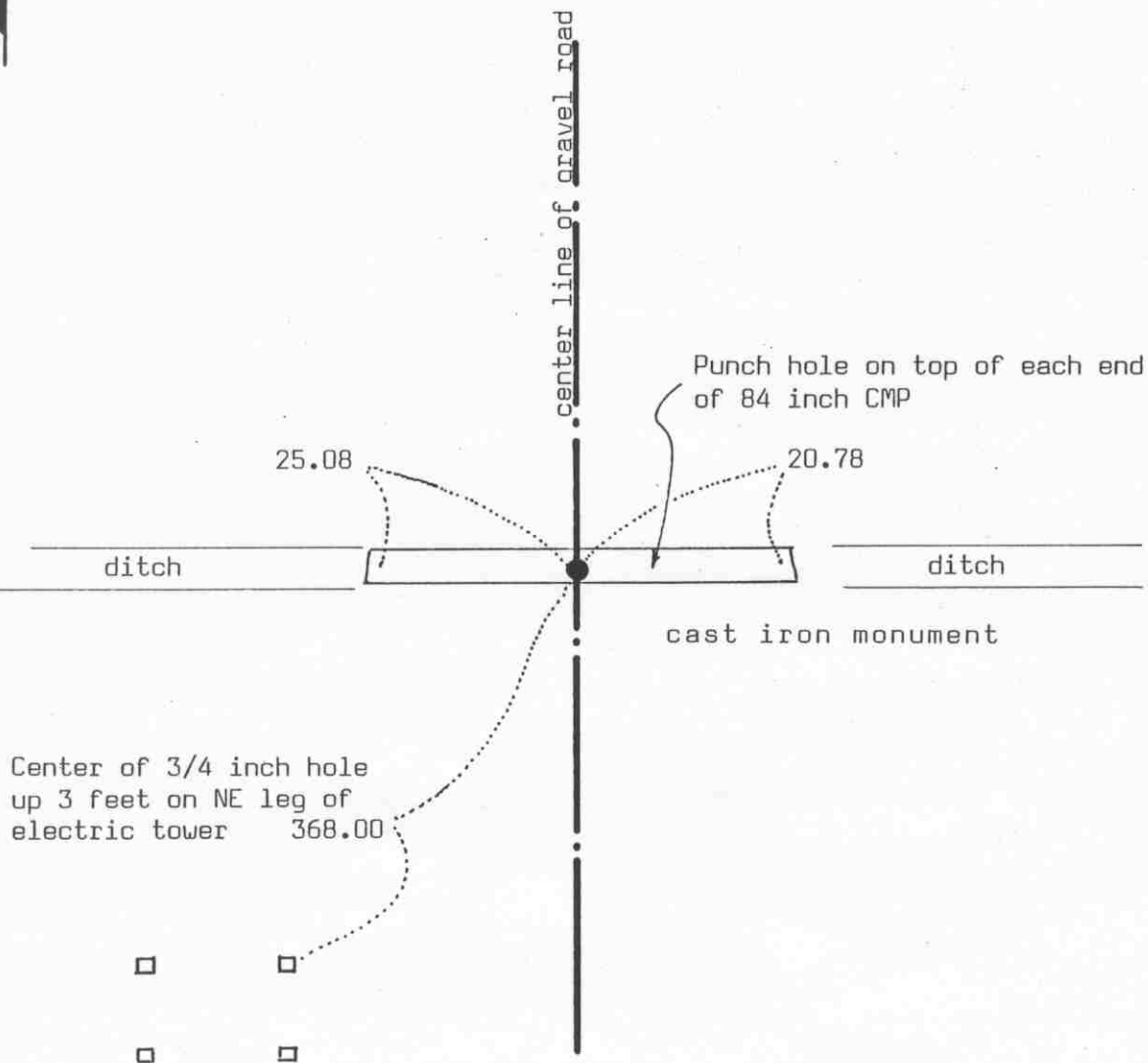
# Certificate of Location of Government Corner

## SKETCH OF REFERENCE TIES

(NO SCALE)

SECTION 35

SECTION 36



Statement of evidence relative to this corner location on sheet 2

I hereby certify that this document was prepared by me or under my direct supervision.

Willard Pellinen  
Willard Pellinen  
McLeod County Surveyor  
License No. 9626

Date Dec. 22, 1993.

OFFICE OF THE COUNTY RECORDER  
MCLEOD COUNTY, MINNESOTA.

I hereby certify that this document was filed in this office at 9 o'clock A.M. on the 22nd day of January, 1994.

Carmen Estlie Mulder, County Recorder

By \_\_\_\_\_, Deputy

Document No. 257394



EAST QUARTER corner, Section 35, Township 116 North, Range 28 West

## Certificate of Location of Government Corner

September, 1856. D. L. Langton of the General Land Office established this corner. He set a post (in a wet marsh) in mound, dug 4 pits and deposited charcoal.

March 10, 1978. Willard Christensen, 60 years old, in the Southeast Quarter of Section 35 and Frank Baumchen, 63 years old and in the Northwest Quarter of Section 36, said the center line of the north-south road and the center line of the east-west ditch are on the section and quarter section lines of Sections 35 and 36.

Any government corner would have been destroyed when the culvert was installed across the road.

June 22, 1979. We set a McLeod County cast iron monument in the center line of the north-south road over the culvert running across the road, and took available reference ties.

This falls within  $\frac{1}{2}$  of a foot of 1931 distances to the north-east and southeast corners of Section 35. 1931 distances by the county highway department were to the center of a bridge across the road.

October 26, 1993. We found the monument in good condition and checked the reference ties.

NORTHEAST corner, Section 35, Township 116 North, Range 28 West

# Certificate of Location of Government Corner

SKETCH OF REFERENCE TIES  
(NO SCALE)

SECTION 26

SECTION 25

Nail and bottle cap  
East face of post by  
telephone pedestal.

54.05

Nail and bottle cap  
SE face of power pole

48.00

South edge of southerly post  
of T-Road sign, up 3 feet.

22.68

center line of gravel road

cast iron monument

center line of gravel road

SECTION 35

SECTION 36

Statement of evidence relative to this corner location on sheet 2

I hereby certify that this document was prepared by me or under my direct supervision.

Willard Pellinen

Willard Pellinen  
McLeod County Surveyor  
License No. 9626

Date Dec. 20, 1993.

OFFICE OF THE COUNTY RECORDER  
MCLEOD COUNTY, MINNESOTA.

I hereby certify that this document was filed in this office at 9 o'clock A. M. on the 21st day of January, 1994.

Carmen Ottilie Mulder, County Recorder

By \_\_\_\_\_, Deputy

Document No. 257393

NORTHEAST            corner, Section 35, Township 116 North, Range 28 West

## Certificate of Location of Government Corner

September, 1856. D. L. Langton of the General Land Office set a post and marked 4 aspens for bearing trees.

1931. The county highway department field notes show a stone monument at the corner.

May 5, 1975. Dickman Knutson, county surveyor, dug for the corner but found no evidence of a monument. Adjoining land owners have accepted the center line intersection of the roads as being the section corner. They didn't know of any monument at the corner.

Knutson set a  $\frac{1}{2}$  inch diameter iron pipe at the corner, at the center line intersection of the roads and took available reference ties. This is within a few tenths of a foot of being the same distance to the east quarter corner of Section 35 and to the east quarter corner of Section 26 as the 1931 distances by the highway department.

October 15, 1975. Knutson set a McLeod County cast iron monument at the corner.

December 30, 1983. We found the monument had been disturbed. We used the old ties and old distances to reset the corner. We took additional ties.

October 26, 1993. We found no reference ties remaining. We found the monument badly tipped. We dug out the entire monument and reset it in the original location and took new reference ties. We set a  $\frac{1}{2}$  inch iron pipe, 14 inches long, below the monument.

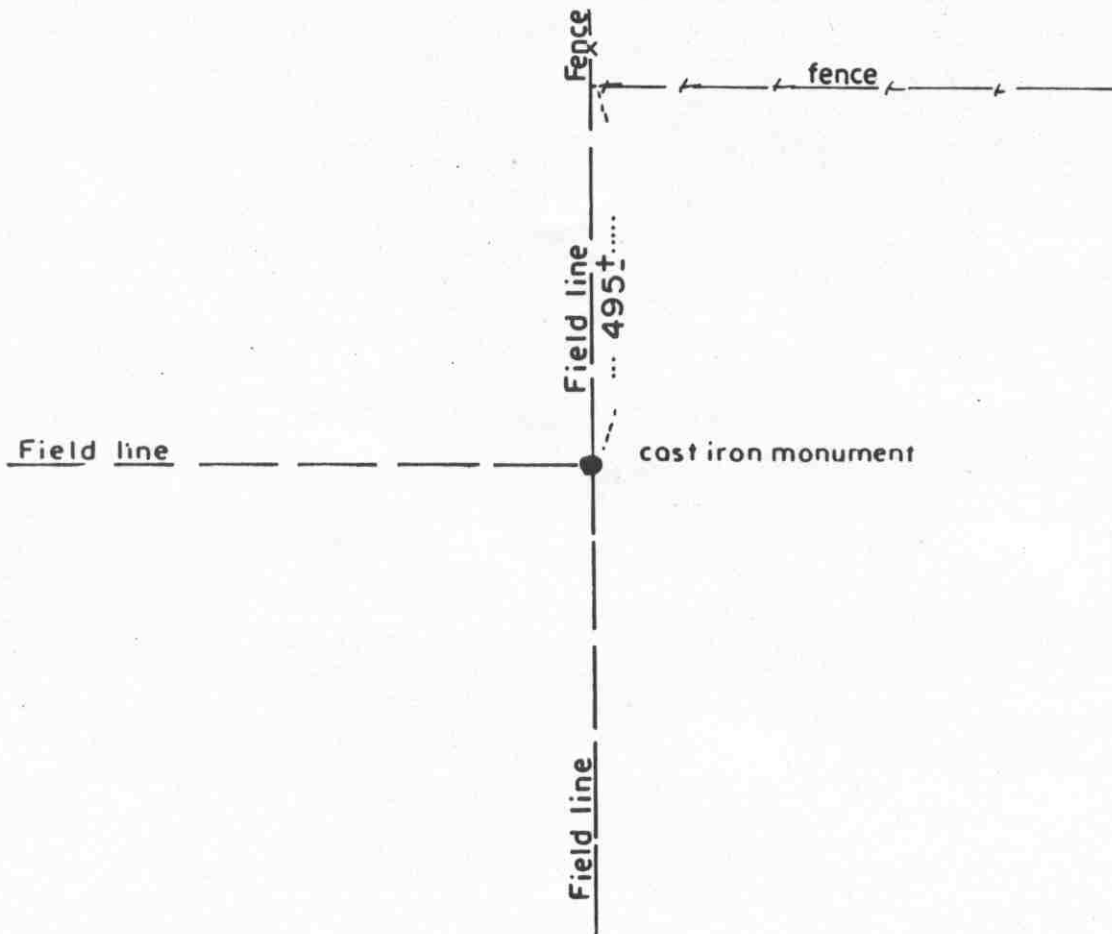
There being no evidence to the contrary, we accept the monument set by Knutson as marking the correct location of the government corner.

NORTH QUARTER corner, Section 35, Township 116 North, Range 28 West

# Certificate of Location of Government Corner

SKETCH OF REFERENCE TIES  
(NO SCALE)

SECTION 26



SECTION 35

Statement of evidence relative to this corner location on sheet 2

I hereby certify that this document was prepared by me or under my direct supervision.

Willard Pellinen  
Willard Pellinen  
McLeod County Surveyor  
License No. 9626

Date Dec. 13, 1990

OFFICE OF THE COUNTY RECORDER  
MCLEOD COUNTY, MINNESOTA.

I hereby certify that this document was filed in this office at 9 o'clock A. M. on the 9th day of January, 19 96.

Carmen Estelle Mulder, County Recorder

By Charleen Engelman, Deputy

Document No. 270213

NORTH QUARTER corner, Section 35, Township 116 North, Range 28 West

## Certificate of Location of Government Corner

September, 1856. D. L. Langton of the General Land Office set a post and marked 2 aspens for bearing trees.

Adjoining land owners say the quarter corner is on the intersection of field lines north, south and west. No property line to the east. Any monument at the corner would have been destroyed when the ground and brush at the corner was leveled.

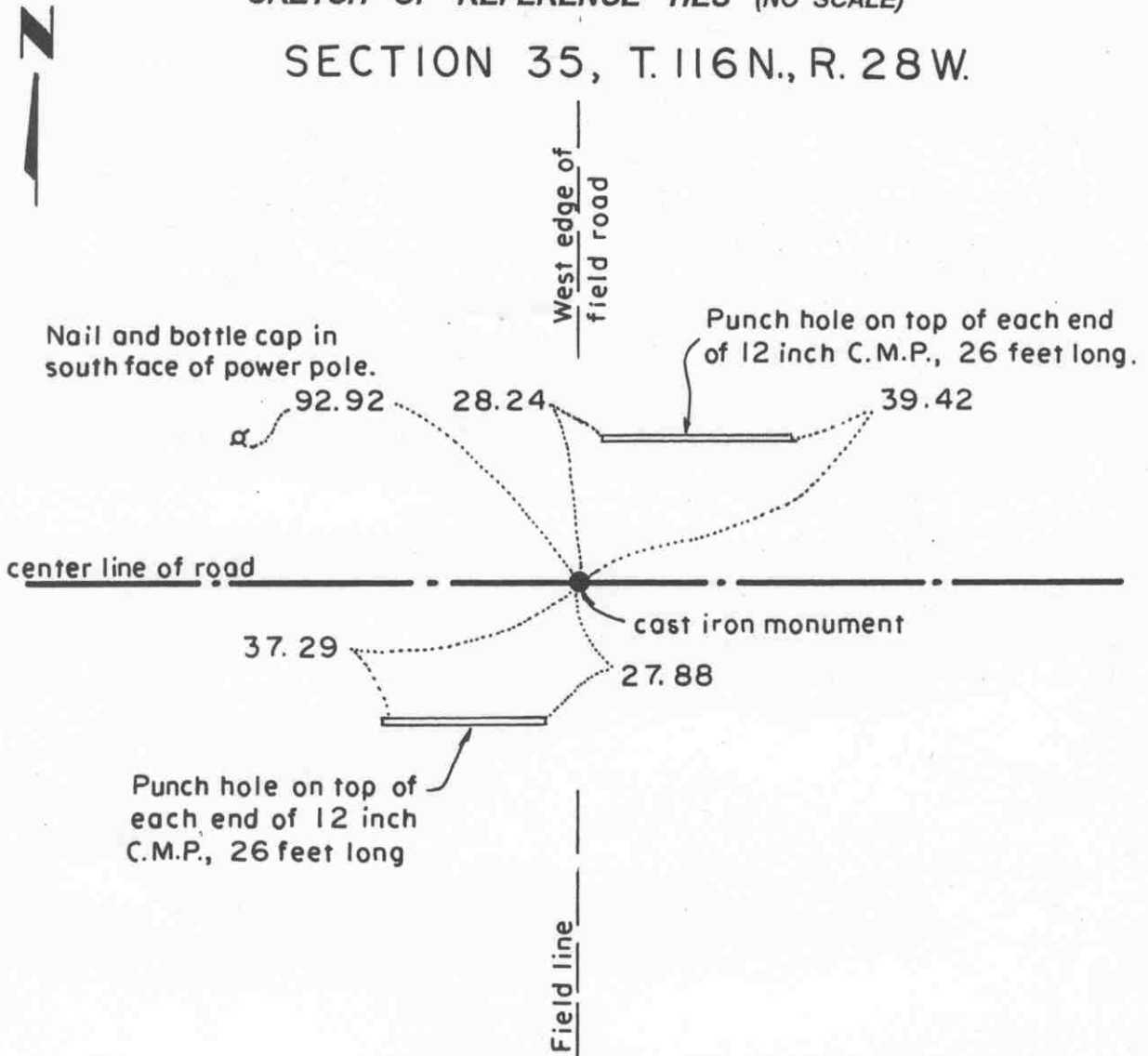
November 8, 1985. We set a McLeod County cast iron monument at the intersection of the field lines.

# Certificate of Location of Government Corner

North Quarter corner, Section 2, Township 115 North, Range 28 West

SKETCH OF REFERENCE TIES (NO SCALE)

SECTION 35, T. 116 N., R. 28 W.



SECTION 2, T. 115 N., R. 28 W

Statement of evidence relative to this corner location on sheet 2

I hereby certify that this document was prepared by me or under my direct supervision.

Willard Pellinen  
Willard Pellinen  
McLeod County Surveyor  
License No. 9626.

Date Feb. 3, 1995

OFFICE OF THE COUNTY RECORDER  
MCLEOD COUNTY, MINNESOTA

I hereby certify that this document was filed in this office at 9 o'clock A. M. on the 6th day of February, 19 95.

Carmen Ottilie Mulder, County Recorder

By \_\_\_\_\_, Deputy.

Document No. 264001

**Certificate of Location of Government Corner**  
**North Quarter Corner, Section 2, Township 115 North, Range 28 West**

*1855. John Ryan of the General Land Office established this corner. He set a post and marked an 8 inch aspen and a 9 inch aspen for bearing trees.*

*September 11, 1969. Dickman Knutson, county surveyor, found a 1/2 inch diameter iron rod at the center line of the east-west road in line with a field line to the south and took available reference ties.*

*1970. Knutson replaced the iron rod with a McLeod County cast iron monument.*

*February 11, 1987. We found the monument down 6 inches below the surface of the road and took new ties.*

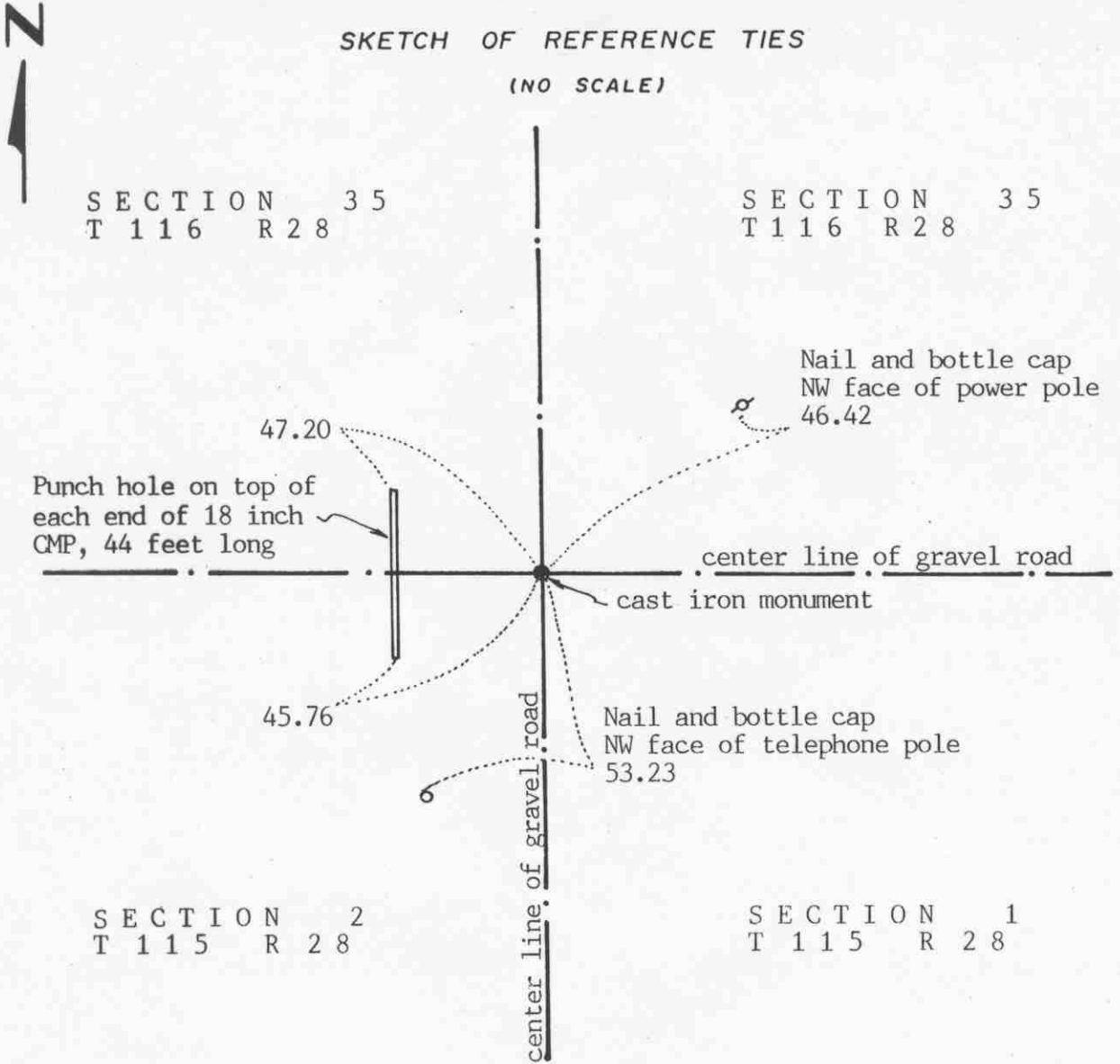
*January 13, 1995. We checked the reference ties to the monument.*

*The monument set by Knutson is accepted as marking the location of the government corner. It fits long standing occupation lines and it perpetuates the location of an older monument.*

# Certificate of Location of Government Corner

SKETCH OF REFERENCE TIES

(NO SCALE)



Statement of evidence relative to this corner location on sheet 2

I hereby certify that this document was prepared by me or under my direct supervision.

Willard Pellinen  
Willard Pellinen  
McLeod County Surveyor  
License No. 9626

Date Sept. 2, 1991

OFFICE OF THE COUNTY RECORDER  
MCLEOD COUNTY, MINNESOTA.

I hereby certify that this document was filed in this office at 4:30 o'clock P..M. on the 3rd day of Oct, 1991.

Carmen Ostlie, County Recorder

By \_\_\_\_\_, Deputy

Document No. 241302



NORTHEAST corner, Section 2, Township 115 North, Range 28 West

## Certificate of Location of Government Corner

1855. John Ryan of the General Land Office set a post and marked 3 aspens for bearing trees.

March 19, 1931. Field notes for Township Road survey show a 1 inch by 2 inch wood stake at the corner on the center line intersection of the roads.

1970. McCombs Knutson Associates (Dickman Knutson, county surveyor) dug for the corner and found a wood stake on the center line intersection of the roads. Willard Christensen, in the Southeast Quarter of Section 35, said the center line of the roads is the correct corner. Knutson set a McLeod County cast iron monument at the corner.

March 10, 1978. Knutson took new available ties to the corner.

February 11, 1987. All the old ties destroyed. We took new reference ties.

June 21, 1990. We found the monument in good condition and checked the reference ties.

We accept the wood stake found by Knutson as having perpetuated the correct location of the section corner.

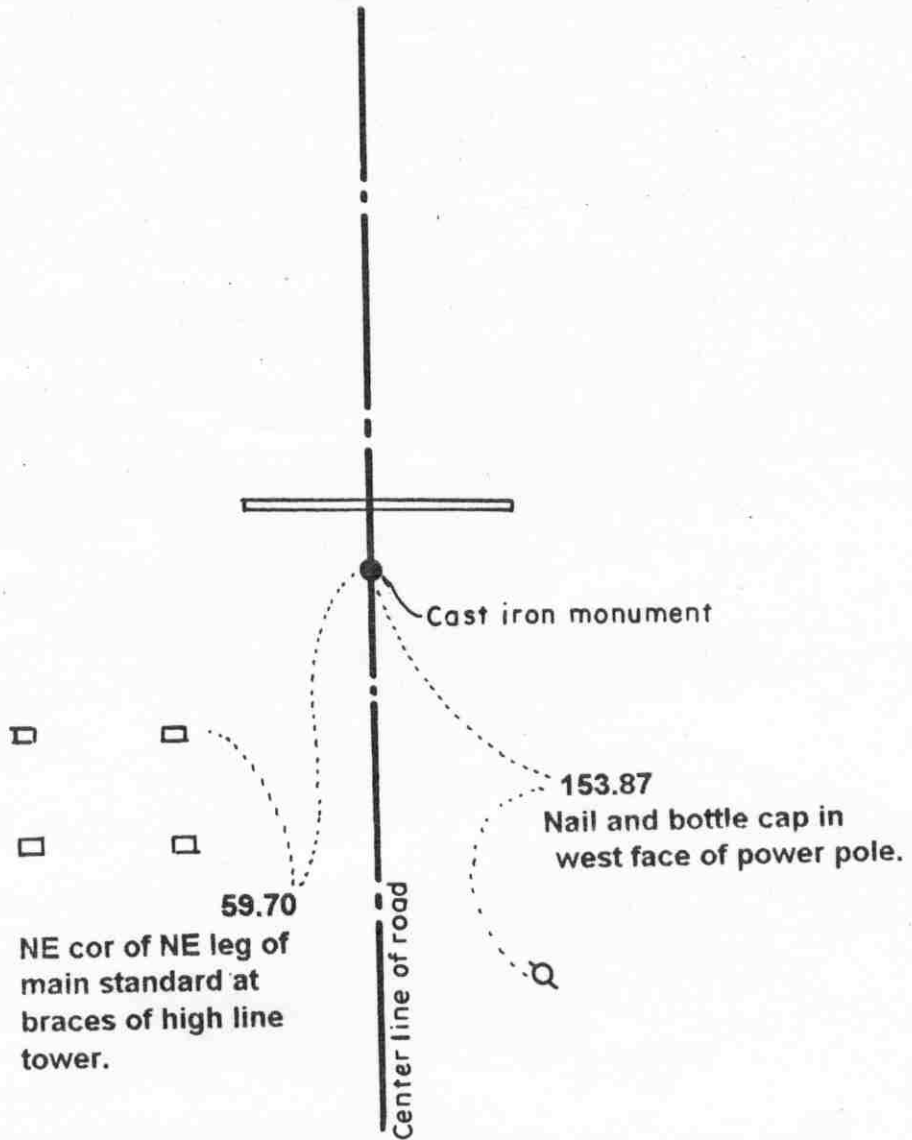
# Certificate of Location of Government Corner

East Quarter corner, Section 36, Township 116 North, Range 28 West

SKETCH OF REFERENCE TIES (NO SCALE)

SECTION 36, T.116N., R.28W.

SECTION 31, T.116N., R.27W.



Statement of evidence relative to this corner location on sheet 2

I hereby certify that this document was prepared by me or under my direct supervision.

Willard Pellinen  
Willard Pellinen  
McLeod County Surveyor  
License No. 9626.

Date Oct. 9, 1995

OFFICE OF THE COUNTY RECORDER  
MCLEOD COUNTY, MINNESOTA

I hereby certify that this document was filed in this office at 9 o'clock A M. on the 13th day of October 19 95.

Carmen Estlin Mulder, County Recorder

By \_\_\_\_\_, Deputy.

Document No. 268604

***Certificate of Location of Government Corner***  
***East Quarter Corner, Section 36, Township 116 North, Range 28 West***

***1855. This corner was originally established by the General Land Office. John Ryan set a post, in a wet marsh, and marked an 18 inch oak and a 10 inch oak for bearing trees.***

***December, 1968. Dickman Knutson, county surveyor, excavated for the corner and found an iron pin.***

***Knutson replaced the iron pin with a McLeod County cast iron monument and took reference ties.***

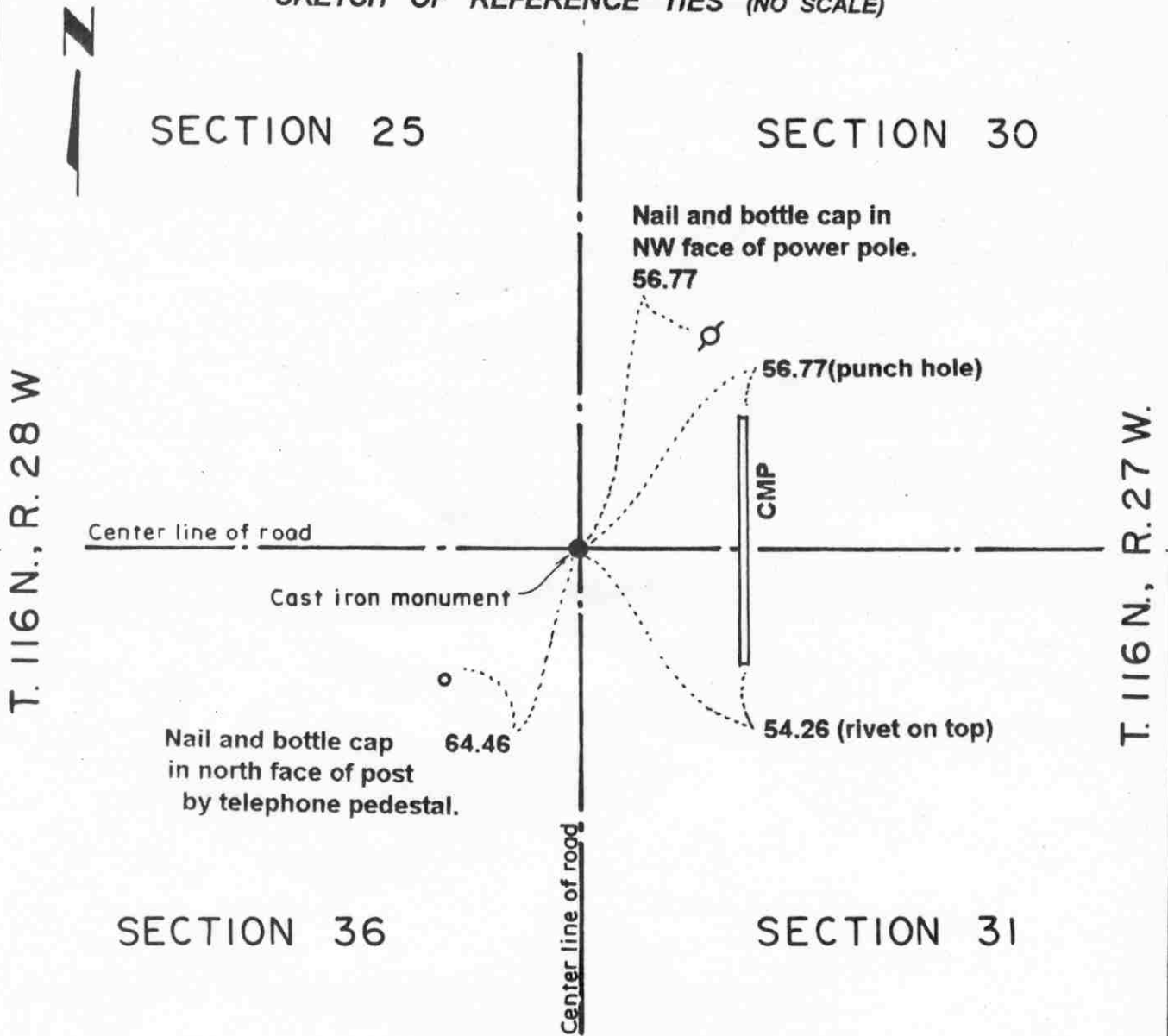
***July 28, 1987. We found the monument in good condition down 4 inches below the surface of the bituminous road and took new reference ties.***

***May 15, 1995. We checked the reference ties to the monument***

# Certificate of Location of Government Corner

Northeast corner, Section 36, Township 116 North, Range 28 West

## SKETCH OF REFERENCE TIES (NO SCALE)



### Statement of evidence relative to this corner location on sheet 2

I hereby certify that this document was prepared by me or under my direct supervision.

Willard Pellinen  
 Willard Pellinen  
 McLeod County Surveyor  
 License No. 9626.

Date Oct. 9, 1995

### OFFICE OF THE COUNTY RECORDER MCLEOD COUNTY, MINNESOTA

I hereby certify that this document was filed in this office at 9 o'clock A. M. on the 13th day of October 19 95.

Carmen Josie Gulder, County Recorder

By \_\_\_\_\_, Deputy.

Document No. 268603

**Certificate of Location of Government Corner**  
**Northeast Corner, Section 36, Township 116 North, Range 28 West**

*1855. John Ryan of the General Land Office established this corner. He set a post in a wet marsh and marked a 7 inch cherry tree, a 7 inch aspen and a 14 inch aspen for bearing trees.*

*1968. Adjoining land owners agree the corner is the center line intersection of the roads.*

*December, 1968. Dickman Knutson, county surveyor, dug for the corner. He found an iron pin and a wood stake and took reference ties. This was at the center line of the roads, north, south, east and west.*

*1969. Knutson set a McLeod County cast iron monument.*

*July 7, 1987. We found the monument in good condition down 4 inches below the surface of the bituminous road and took new available ties.*

*June, 1994. We checked the reference ties.*

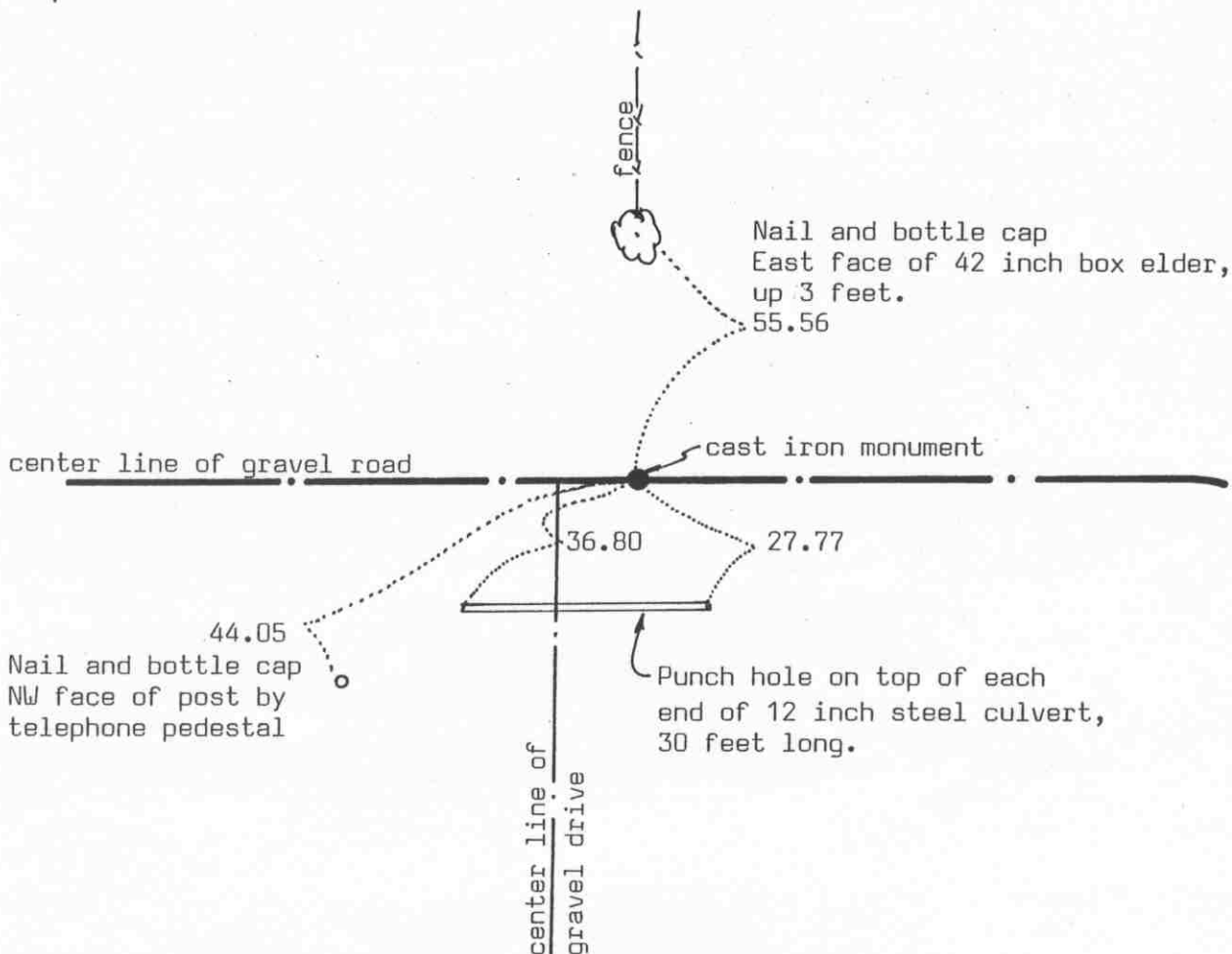
NORTH QUARTER corner, Section 36, Township 116 North, Range 28 West

# Certificate of Location of Government Corner

## SKETCH OF REFERENCE TIES

(NO SCALE)

### SECTION 25



### SECTION 36

Statement of evidence relative to this corner location on sheet 2

I hereby certify that this document was prepared by me or under my direct supervision.

Willard Pellinen

Willard Pellinen  
McLeod County Surveyor  
License No. 9626

Date Dec. 20, 1993

OFFICE OF THE COUNTY RECORDER  
MCLEOD COUNTY, MINNESOTA.

I hereby certify that this document was filed in this office at 9 o'clock A. M. on the 21st day of January, 1994.

Carmen Estelle Mulder, County Recorder

By \_\_\_\_\_, Deputy

Document No. 257395

NORTH QUARTER corner, Section 36, Township 116 North, Range 28 West

## Certificate of Location of Government Corner

September, 1856. D. L. Langton of the General Land Office established this corner. He set a wood post and marked an aspen and a cherry tree for bearing trees.

March 10, 1978. Mr James Trnka, 72 years old and had lived in the Northwest Quarter of Section 36 since 1936 said the gravel drive running south is west of the quarter line. We measured the north line of Section 36 and set a temporary quarter corner in the center of the east-west road approximately half way between the section corners. This was east of the gravel drive and in line with a fence to the north.

July 26, 1982. We dug for the corner, John Tupa from Hutchinson with a backhoe. Down 2 feet below the road surface, we found two stones, about 8 inches and 6 inches in diameter. We took reference ties and below the stones we found an angle iron, 3 feet below the surface. We left the iron in place and took reference ties. Iron was directly below the stones.

August 26, 1982. We set a McLeod County cast iron monument at the corner. The corner is 0.16 feet east of a split and 0.74 feet north of a straight line between the section corners.

October 26, 1993. We found the monument in good condition down 6 inches below the surface of the gravel road and took new reference ties.

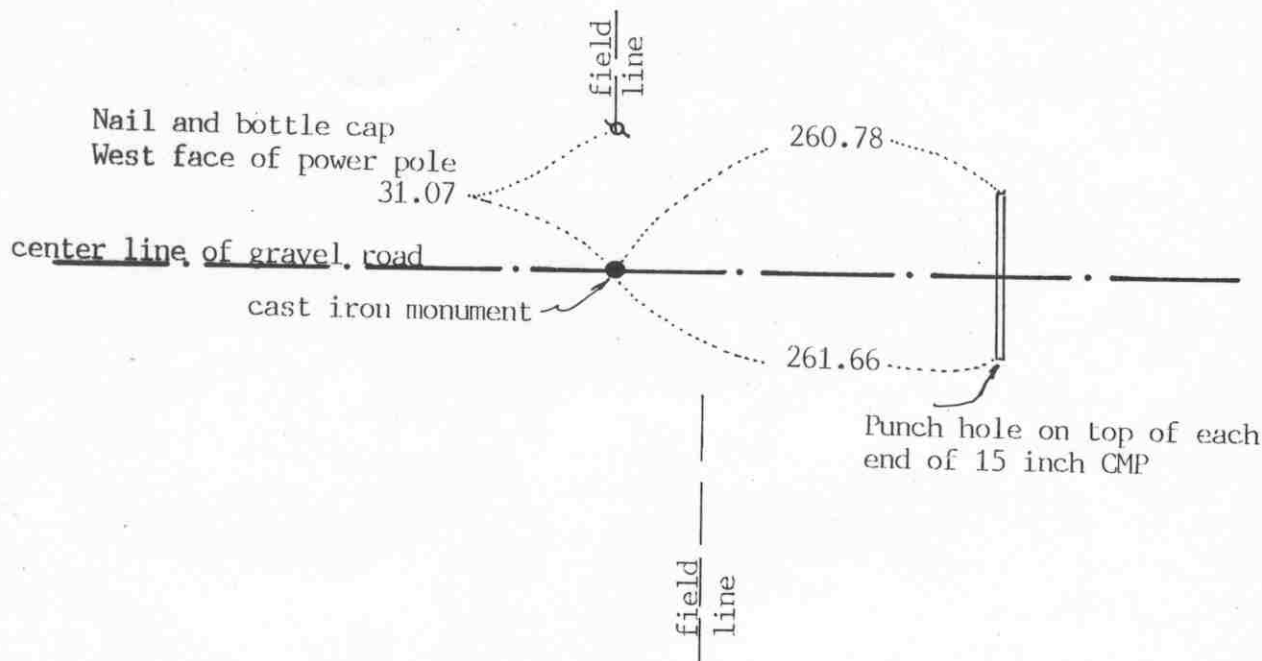
# Certificate of Location of Government Corner



## SKETCH OF REFERENCE TIES (NO SCALE)

SECTION 36

T. 116, R. 28



SECTION 1  
T. 115, R. 28

Statement of evidence relative to this corner location on sheet 2

I hereby certify that this document was prepared by me or under my direct supervision.

Willard Pellinen  
Willard Pellinen  
McLeod County Surveyor  
License No. 9626

Date Sept. 30, 1991

OFFICE OF THE COUNTY RECORDER  
MCLEOD COUNTY, MINNESOTA.

I hereby certify that this document was filed in this office at 1 o'clock P.M. on the 21st day of Oct, 1991.

Carmen O'Brien, County Recorder  
By \_\_\_\_\_, Deputy

Document No. 241585



NORTH QUARTER corner, Section 1, Township 115 North, Range 28 West

## Certificate of Location of Government Corner

1855. John Ryan originally set a post at this corner and marked 2 aspens for bearing trees.

September 1, 1969. McCombs Knutson Associates measured the north line of Section 1 and set a temporary quarter corner on the center line of the east-west road in line with a fence to the south. There was also a field line running north about  $13\frac{1}{2}$  feet west of the temporary corner.

September 10, 1970. Knutson ran a line from the north quarter corner of Section 36 through a north-south fence near the center of Section 36. This line intersected the south line of Section 36 at the field line which was  $13\frac{1}{2}$  feet west of the temporary corner.

Knutson dug for the corner, John Tupa from Hutchinson with a backhoe. They dug a long hole along the center line of the road between the fence line running south and the field line running north but found nothing.

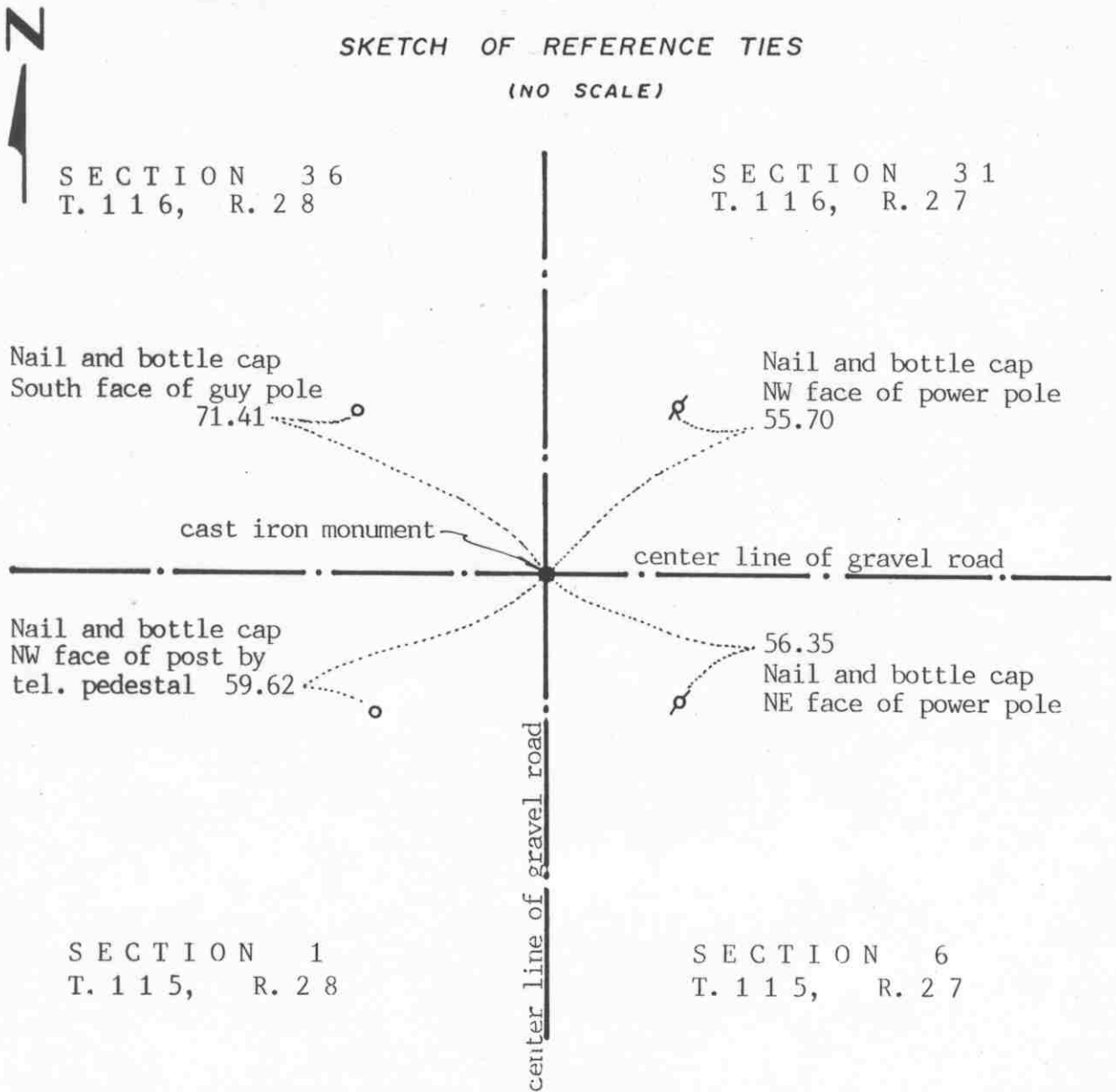
October 27, 1970. Knutson set a McLeod County cast iron monument on the center line of the road half way between the section corners and took available reference ties.

June 21, 1990. We found the monument, top broken off, but the bottom of the monument in place and took new reference ties.

There being no evidence to the contrary, we accept the monument set by Knutson as marking the correct location of the quarter corner.

# Certificate of Location of Government Corner

SKETCH OF REFERENCE TIES  
(NO SCALE)



Statement of evidence relative to this corner location on sheet 2

I hereby certify that this document was prepared by me or under my direct supervision.

Willard Pellinen  
Willard Pellinen  
McLeod County Surveyor  
License No. 9626  
Date Oct. 3, 1991

OFFICE OF THE COUNTY RECORDER  
MCLEOD COUNTY, MINNESOTA.

I hereby certify that this document was filed in this office at 1 o'clock P.M. on the 21st day of Oct, 1991.

Carmen Hotliu, County Recorder  
By \_\_\_\_\_, Deputy  
Document No. 241584

## Certificate of Location of Government Corner

1855. John Ryan of the General Land Office set a post and marked 3 elms and an ironwood for bearing trees.

January, 1900. E.L.Higgins found an old stake 2 rods from a fence corner and put in a stone and a stake. He measured 2661 feet to the east quarter corner of Section 1.

December, 1968. McCombs Knutson Associates (Dickman Knutson, county surveyor) measured the east line of Section 1 and set a temporary corner at the center line intersection of the roads.

1969. Knutson dug for the corner but found nothing.

October 26, 1970. Knutson set a McLeod County cast iron monument at the center line intersection of the roads and took available reference ties.

November, 1990. We found the monument in good condition and measured 2661.05 feet to the east quarter corner compared with 2661 feet by Higgins. We took new reference ties.

There being no evidence to the contrary, we accept the monument set by Knutson as marking the section corner. It is on old occupation lines, the center lines of the roads and the distance to the east quarter corner is the same as in 1900.